

AR50776PU-S**Human POLR2J2 (1-115, His-tag) - Purified****Alternate names:**

DNA-directed RNA polymerase II subunit RPB11-b1, HRPB11B, RPB11b1

Quantity:

50 µg

Concentration:

0.25 mg/ml (determined by Bradford assay)

Background:

POLR2J2 is a member of the RNA polymerase II subunit 11 gene family, which includes three genes in a cluster on chromosome 7q22.1 and a pseudogene on chromosome 7p13. The founding member of family, DNA directed RNA polymerase II polypeptide J, has been shown to encode a subunit of RNA polymerase II, the polymerase responsible for synthesizing messenger RNA in eukaryotes. This locus produces multiple, alternatively spliced transcripts that potentially express isoforms with distinct C-termini compared to DNA directed RNA polymerase II polypeptide J. Most or all variants are spliced to include additional non-coding exons at the 3' end which makes them candidates for nonsense-mediated decay (NMD). Consequently, it is not known if this locus expresses a protein or proteins in vivo.

Uniprot ID:[F6W009](#)**NCBI:**[NP_116581](#)**GenelD:**[246721](#)**Species:**

Human

Source:

E. coli

Format:**State:** Liquid purified protein**Purity:** >95% by SDS - PAGE**Buffer System:** 20 mM Tris-HCl buffer (pH 8.0) containing 0.15M NaCl, 10% glycerol, 1mM DTT, 250mM Imidazole**Description:**

Recombinant human POLR2J2 protein, fused to His-tag at N-terminus, was expressed in E.coli and purified by using conventional chromatography techniques.

AA Sequence:

MGSSHHHHHH SGLVPRGSH MGS MNAPP AF ESFLFEGEK ITINKDTKVP KACLFTINKE
DHTLGNI IKS QLLKDPQVLF AGYKVPHPLE HKIIRVQTT PDYSPQE AFT NAITDLISEL
SLLEERFRTC LPLRLLP

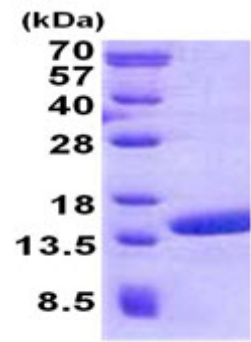
Molecular weight: 15.5 kDa (138aa) confirmed by MALDI-TOF**Storage:**

Store undiluted at 2-8°C for one week or (in aliquots) at -20°C to -80°C for longer. Avoid repeated freezing and thawing. Shelf life: one year from despatch.

General Readings:

Shpakovskii,D.G., et al. (2004) Bioorg. Khim. 30 (6), 621-625
Benga,W.J., et al. (2005) Nucleic Acids Res. 33 (11), 3582-3590

Pictures:



15% SDS-PAGE (3ug)