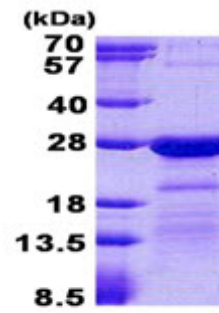


AR50758PU-S**Human HN1L (1-190, His-tag) - Purified**

Alternate names:	C16orf34, HN1-like protein, Hematological and neurological expressed 1-like protein, L11
Quantity:	0.1 mg
Concentration:	1 mg/ml (determined by Bradford assay)
Background:	Hematological and neurological expressed 1-like, also known as HN1L, is proposed to be involved in embryo development. HN1L is expressed in a variety of tissues such as liver, kidney, prostate, testis and uterus at varying levels.
Uniprot ID:	Q9H910
NCBI:	NP_653171
GeneID:	90861
Species:	Human
Source:	E. coli
Format:	State: Liquid purified protein Purity: >90% by SDS - PAGE Buffer System: 20 mM Tris-HCl buffer (pH 8.0) containing 0.15M NaCl, 10% glycerol, 1mM DTT
Description:	Recombinant human HN1L protein, fused to His-tag at N-terminus, was expressed in E.coli and purified by using conventional chromatography techniques. AA Sequence: MGSSHHHHHH SGLVPRGSH MGSFMFQVPDS EGGRAGSRAM KPPGGESSNL FGSPEEATPS SRPNRMASNI FGPTTEPQNI PKRTNPPGGK GSGIFDESTP VQTRQHLNPP GGKTSDFGS PVTATSRLAH PNKPKDHVFL CEGEEPKSDL KAARSIPAGA EPGEKGSARK AGPAKEQEPM PTVDSHEPRL GPRPRSHNKV LNPPGGKSSI SFY Molecular weight: 22.5 kDa (213aa) confirmed by MALDI-TOF
Storage:	Store undiluted at 2-8°C for one week or (in aliquots) at -20°C to -80°C for longer. Avoid repeated freezing and thawing. Shelf life: one year from despatch.
General Readings:	Zhou G., et al. (2004) Gene. 331:115-123Petroziello J., et al. (2004) Oncogene. 23:7734-7745

Pictures:



15% SDS-PAGE (3ug)