

AR50753PU-N**Human BUB3 (1-328, His-tag) - Purified****Alternate names:**

Mitotic checkpoint protein BUB3

Quantity:

0.5 mg

Concentration:

1 mg/ml (determined by Bradford assay)

Background:

Mitotic checkpoint protein BUB3, also known as BUB3, is a conserved component of the mitotic spindle assembly complex (MCC). The encoded protein contains four WD repeat domains and has sequence similarity with the yeast BUB3 protein. BUB3 is essential for the kinetochore localization of BUB1 and BUBR1. BUB3 is involved in the essential spindle checkpoint pathway that operates during early embryogenesis. In addition, BUB3 plays a role in regulating the establishment of correct kinetochore-microtubule attachments.

Uniprot ID:[O43684](#)**NCBI:**[NP_004716](#)**GeneID:**[9184](#)**Species:**

Human

Source:

E. coli

Format:**State:** Liquid purified protein**Purity:** >85% by SDS - PAGE**Buffer System:** 20 mM Tris-HCl buffer (pH 8.0) containing 0.4M Urea, 10% glycerol**Description:**

Recombinant human BUB3 protein, fused to His-tag at N-terminus, was expressed in E.coli.

AA Sequence:

```
MGSSHHHHHH SSGLVPRGSH MGSMTGSNEF KLNQPPEDGI SSVKFSPTS QFLLVSSWDT  
SVRLYDVPAN SMRLKYQHTG AVLDCAFYDP THAWSGGLDH QMKMHLNTD QENLVGTHDA  
PIRCVEYCPE VNVMVTGSWD QTVKLWDPRT PCNAGTFSQP EKVYTLVSVG DRLIVGTAGR  
RVLVWDLRNM GYVQQRRESS LKYQTRCIRA FPNKQGYVLS SIEGRVAVEY LDPSPEVQKK  
KYAFKCHRLK ENNIEQIYPV NAISFHNIHN TFATGGSDF VNIWDPFNKK RLCQFHRYPT  
SIASLAFSND GTTLAIASSY MYEMDDTEHP EDGIFIRQVT DAETKPKSPC T
```

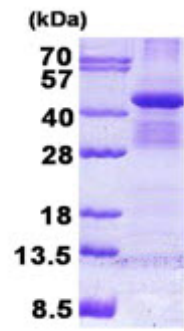
Molecular weight: 39.5 kDa (351aa)**Storage:**

Store undiluted at 2-8°C for one week or (in aliquots) at -20°C to -80°C for longer. Avoid repeated freezing and thawing. Shelf life: one year from despatch.

General Readings:

Martinez Exposito M J., et al. (1999) Proc Natl Acad Sci USA. 96:8493-8498. Warren C D., et al. (2002) Mol Biol Cell. 13:3029-3041.

Pictures:



15% SDS-PAGE (3ug)