

AR50726PU-S**Human CLEC2B (26-149, His-tag) - Purified****Alternate names:**

AICL, Activation-induced C-type lectin, C-type lectin domain family 2 member B, C-type lectin superfamily member 2, CLECSF2, IFN-alpha2b-inducing-related protein 1, IFNRG1

Quantity:

0.1 mg

Concentration:

1 mg/ml (determined by Bradford assay)

Background:

CLEC2B is a member of the C-type lectin/C-type lectin-like domain (CTL/CTLD) superfamily. Members of this family share a common protein fold and have diverse functions, such as cell adhesion, cell-cell signalling, glycoprotein turnover, and roles in inflammation and immune response. The type 2 transmembrane protein may function as a cell activation antigen. An alternative splice variant has been described but its full-length sequence has not been determined. This gene is closely linked to other CTL/CTLD superfamily members on chromosome 12p13 in the natural killer gene complex region.

Uniprot ID:

[Q92478](#)

NCBI:

[NP_005118.2](#)

GeneID:

[9976](#)

Species:

Human

Source:

E. coli

Format:

State: Liquid purified protein

Purity: >90% by SDS - PAGE

Buffer System: 20 mM Tris-HCl buffer (pH 8.0) containing 2M UREA, 10% glycerol

Description:

Recombinant human CLEC2B protein, fused to His-tag at N-terminus, was expressed in E.coli.

AA Sequence:

MGSSHHHHHH SGLVPRGSH MGSKLTRDSQ SLCPYDWIGF QNKCYFSKE EGDWNSSKYN
CSTQHADLTI IDNIEEMNFL RRYKCSSDHW IGLKMAKNRT GQWVDGATFT KSFGMRGSEG
CAYLSDDGAA TARCYTERKW ICRKRIH

Molecular weight: 16.9 kDa (147aa)

Storage:

Store undiluted at 2-8°C for one week or (in aliquots) at -20°C to -80°C for longer.

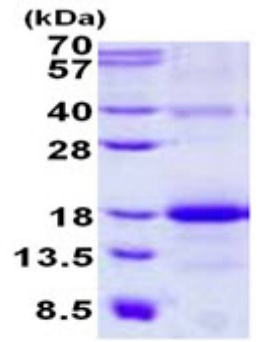
Avoid repeated freezing and thawing.

Shelf life: one year from despatch.

General Readings:

Akatsuka,A., et al. (2010) Int. Immunol. 22 (9), 783-790

Pictures:



15% SDS-PAGE (3ug)