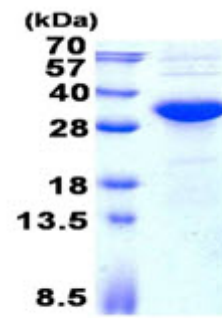


AR50717PU-N**Human KCTD15 (1-234, His-tag) - Purified**

Alternate names:	BTB/POZ domain-containing protein KCTD15, KCTD-15, KCTD15
Quantity:	0.5 mg
Concentration:	1 mg/ml (determined by Bradford assay)
Background:	Potassium channel tetramerisation domain containing 15, also known as KCTD15, may be associated with obesity. KCTD15 was identified as a genetic loci associated with higher than normal body mass index (BMI) in humans along with genes such as GNPDA2, MTCH2, FTO, and TMEM18.
Uniprot ID:	Q96S11
NCBI:	NP_076981
GeneID:	79047
Species:	Human
Source:	E. coli
Format:	State: Liquid purified protein Purity: >90% by SDS - PAGE Buffer System: 20 mM Tris-HCl buffer (pH 8.0) containing 0.4M urea, 10% glycerol
Description:	Recombinant human KCTD15 protein, fused to His-tag at N-terminus, was expressed in E.coli. AA Sequence: MGSSHHHHHH SSGLVPRGSH MPHRKERPSS SSLHTHGSTG TAEGGNMSRL SLTRSPVSPL AAQGIPLPAQ LTKSNAPVHI DVGSHMYTSS LATLTKYPDS RISRLFNGTE PIVLDSLKQH YFIDRDGEIF RYVLSFLRST KLLLPDDFKD FSLLYEEARY YQLQPMVREL ERWQQEQEQR RRSRACDCLV VRVTPDLGER IALSGEKALI EEVFPETGDV MCNSVNAGWN QDPTHVIRFP LNGYCR LNSV QDVL Molecular weight: 28.6 kDa (254aa)
Storage:	Store undiluted at 2-8°C for one week or (in aliquots) at -20°C to -80°C for longer. Avoid repeated freezing and thawing. Shelf life: one year from despatch.
General Readings:	Dephoure N., et al. (2008) Proc. Natl. Acad. Sci. U.S.A. 105:10762-10767 Burkard T.R., et al. (2011) BMC Syst. Biol. 5:17-17

Pictures:



15% SDS-PAGE (3ug)