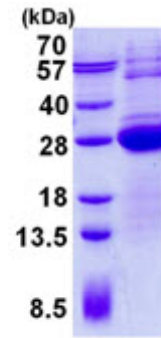


AR50689PU-N**Human LSM12 (1-195, His-tag) - Purified**

Quantity:	0.1 mg
Concentration:	1 mg/ml (determined by Bradford assay)
Background:	LSM12 belongs to the snRNP Sm proteins family. Sm-like proteins were identified in a variety of organisms based on sequence homology with the Sm protein family. Sm-like proteins contain the Sm sequence motif, which consists of 2 regions separated by a linker of variable length that folds as a loop. The Sm-like proteins are thought to form a stable heteromer present in tri-snRNP particles, which are important for pre-mRNA splicing.
Uniprot ID:	Q3MHD2
NCBI:	NP_689557
GenelD:	124801
Species:	Human
Source:	E. coli
Format:	State: Liquid purified protein Purity: >90% by SDS - PAGE Buffer System: 20 mM Tris-HCl buffer (pH 7.5) containing 0.1M NaCl, 10% glycerol, 1mM DTT
Description:	Recombinant human LSM12 protein, fused to His-tag at N-terminus, was expressed in E.coli and purified by using conventional chromatography techniques. AA Sequence: MGSSHHHHHH SSGLVPRGSH MGSMAAPPGE YFSVGSQVSC RTCQEQLRQG EVVAFDYQSK MLALKCPSSS GKPNDADILL INLQYVSEVE IINDRTETPP PLASLNVSKL ASKARTEKEE KLSQAYAISA GVSLEGQQLF QTIHKTIKDC KWQEKNIIVM EEVITPPYQ VENCKGKEGS ALSHVRKIVE KHFRDVESQK ILQRSQAQQP QKEAALSS Molecular weight: 24.1 kDa (218aa), confirmed by MALDI-TOF
Storage:	Store undiluted at 2-8°C for one week or (in aliquots) at -20°C to -80°C for longer. Avoid repeated freezing and thawing. Shelf life: one year from despatch.
General Readings:	Lehner, Ben, et al. (2004) Genome Res. (United States) 14 (7): 1315-23. Achsel T., et al. (1999) EMBO J. 18:5789-5802

Pictures:



15% SDS-PAGE (3ug)