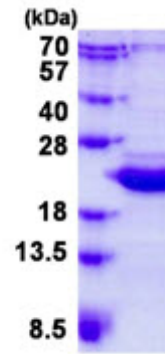


**AR50681PU-S****Human Bcl-2-like 10 (1-172, His-tag) - Purified**

<b>Alternate names:</b>	Anti-apoptotic protein NrH, Apoptosis regulator Bcl-B, BCL2L10, BCLB, Bcl-B, Bcl2-L-10, NrH
<b>Quantity:</b>	0.1 mg
<b>Concentration:</b>	0.5 mg/ml (determined by Bradford assay)
<b>Background:</b>	BCL2L10 belongs to the BCL-2 protein family. BCL-2 family members form hetero- or homodimers and act as anti- or pro-apoptotic regulators that are involved in a wide variety of cellular activities. BCL2L10 contains conserved BH4, BH1 and BH2 domains. This protein can interact with other members of BCL-2 protein family including BCL2, BCL2L1/BCL-X(L), and BAX. Overexpression of this protein has been shown to suppress cell apoptosis possibly through the prevention of cytochrome C release from the mitochondria, and thus activating caspase-3 activation.
<b>Uniprot ID:</b>	<a href="#">Q9HD36</a>
<b>NCBI:</b>	<a href="#">NP_065129</a>
<b>GeneID:</b>	<a href="#">10017</a>
<b>Species:</b>	Human
<b>Source:</b>	E. coli
<b>Format:</b>	<b>State:</b> Liquid purified protein <b>Purity:</b> >90% by SDS - PAGE <b>Buffer System:</b> 20 mM Tris-HCl buffer (pH 8.0) containing 0.15M NaCl, 20% glycerol, 1mM DTT
<b>Description:</b>	Recombinant human BCL2L10 protein, fused to His-tag at N-terminus, was expressed in E.coli and purified by using conventional chromatography techniques. <b>AA Sequence:</b> MGSSHHHHHH SGLVPRGSH MGSMDQLRE RTMADPLRE RTELLADYL GYCAREPGTP EPAPSTPEAA VLRSAAARLR QIHRSFFSAY LGYPGNRFEL VALMADSVLS DSPGPTWGRV VTLVTFAGTL LERGPLVTAR WKKWGFQPR LKEQEGDVARD CQRLVALLSS RLMGQHRAWL QAQGGWDGFC HFFRT <b>Molecular weight:</b> 21.8 kDa (195aa), confirmed by MALDI-TOF
<b>Storage:</b>	Store undiluted at 2-8°C for one week or (in aliquots) at -20°C to -80°C for longer. Avoid repeated freezing and thawing. Shelf life: one year from despatch.
<b>General Readings:</b>	1. Kang Y, Lee DC, et al. (2007). Biochem Biophys Res Commun. 359(1):76-82. 2. Guillemin Y, Lalle P, et al. (2009). J Mol Med (Berl). 87(9):923-40.

Pictures:



15% SDS-PAGE (3ug)