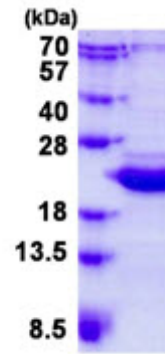


AR50681PU-N**Human Bcl-2-like 10 (1-172, His-tag) - Purified**

Alternate names:	Anti-apoptotic protein NrH, Apoptosis regulator Bcl-B, BCL2L10, BCLB, Bcl-B, Bcl2-L-10, NrH
Quantity:	0.5 mg
Concentration:	0.5 mg/ml (determined by Bradford assay)
Background:	BCL2L10 belongs to the BCL-2 protein family. BCL-2 family members form hetero- or homodimers and act as anti- or pro-apoptotic regulators that are involved in a wide variety of cellular activities. BCL2L10 contains conserved BH4, BH1 and BH2 domains. This protein can interact with other members of BCL-2 protein family including BCL2, BCL2L1/BCL-X(L), and BAX. Overexpression of this protein has been shown to suppress cell apoptosis possibly through the prevention of cytochrome C release from the mitochondria, and thus activating caspase-3 activation.
Uniprot ID:	Q9HD36
NCBI:	NP_065129
GeneID:	10017
Species:	Human
Source:	E. coli
Format:	State: Liquid purified protein Purity: >90% by SDS - PAGE Buffer System: 20 mM Tris-HCl buffer (pH 8.0) containing 0.15M NaCl, 20% glycerol, 1mM DTT
Description:	Recombinant human BCL2L10 protein, fused to His-tag at N-terminus, was expressed in E.coli and purified by using conventional chromatography techniques. AA Sequence: MGSSHHHHHH SGLVPRGSH MGSMDQLRE RTMADPLRE RTELLADYL GYCAREPGTP EPAPSTPEAA VLSAAARLR QIHRSFFSAY LGYPGNRFEL VALMADSVLS DSPGPTWGRV VTLVTFAGTL LERGPLVTAR WKKWGFQPRL KEQEGDVARD CQRLVALLSS RLMGQHRAWL QAQGGWDGFC HFFRT Molecular weight: 21.8 kDa (195aa), confirmed by MALDI-TOF
Storage:	Store undiluted at 2-8°C for one week or (in aliquots) at -20°C to -80°C for longer. Avoid repeated freezing and thawing. Shelf life: one year from despatch.
General Readings:	1. Kang Y, Lee DC, et al. (2007). Biochem Biophys Res Commun. 359(1):76-82. 2. Guillemin Y, Lalle P, et al. (2009). J Mol Med (Berl). 87(9):923-40.

Pictures:



15% SDS-PAGE (3ug)