

AR50653PU-S**Human Amelotin (17-209, His-tag) - Purified****Alternate names:**

AMTN

Quantity:

0.1 mg

Concentration:

0.5 mg/ml (determined by Bradford assay)

Background:

AMTN belongs to the amelotin family. It could be a cell adhesion protein involved in the maturation of tooth enamel. AMTN is a recently discovered secreted enamel protein predominantly expressed during the maturation stage of enamel formation. It accumulates in a basal lamina-like structure at the interface between ameloblasts and enamel mineral and it co-localizes with another recently described enamel protein, odontogenic ameloblast-associated protein (ODAM).

Uniprot ID:[Q6UX39](#)**NCBI:**[NP_997722.1](#)**GeneID:**[401138](#)**Species:**

Human

Source:

E. coli

Format:**State:** Liquid purified protein**Purity:** >90 % by SDS - PAGE**Buffer System:** 20 mM Tris-HCl buffer (pH 8.0) containing 0.2M NaCl, 20% glycerol, 2mM DTT**Description:**

Recombinant human AMTN protein, fused to His-tag at N-terminus, was expressed in E.coli and purified by using conventional chromatography techniques.

AA Sequence:

MGSSHHHHHH SGLVPRGSH MGS L P Q L K P A L G L P P T K L A P D Q G T L P N Q Q Q S N Q V F P S L S L
I P L T Q M L T L G P D L H L L N P A A G M T P G T Q T H P L T L G G L N V Q Q Q L H P H V L P I F V T Q L G A Q G T I
L S S E E L P Q I F T S L I I H S L F P G G I L P T S Q A G A N P D V Q D G S L P A G G A G V N P A T Q G T P A G R L P
T P S G T D D D F A V T T P A G I Q R S T H A I E E A T T E S A N G I Q

Molecular weight: 22.2 kDa (216aa) confirmed by MALDI-TOF**Storage:**

Store undiluted at 2-8°C for one week or (in aliquots) at -20°C to -80°C for longer.

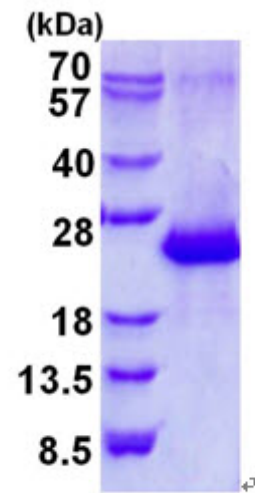
Avoid repeated freezing and thawing.

Shelf life: one year from despatch.

General Readings:

Holcroft J, et al. (2011) Eur J Oral Sci. Dec;119 Suppl 1:301-6.

Pictures:



15% SDS-PAGE (3ug)