

**AR50649PU-N****Human LIN7B (1-207, His-tag) - Purified****Alternate names:**

LIN7B, Lin-7 homolog B, Lin-7B, MALS-2, MALS2, Mammalian lin-seven protein 2, VELI2, Veli-2 protein, Vertebrate lin-7 homolog 2, hLin7B, hVeli2

**Quantity:**

0.25 mg

**Concentration:**

0.25 mg/ml (determined by Bradford assay)

**Background:**

LIN7B, also known as VELI2, belongs to the Velis family. Velis are a family of small synaptic proteins that interact with other proteins at the post-synaptic density (PSD) of neuronal synapses. Velis contain the PDZ motif involved in recruiting cell adhesion molecules, receptors, and channels. Lin7B is ubiquitously expressed with high expression in brain, liver, and testis. It localized at the synaptic junctions in neurons. Lin7B bind to CASK, a neurexin-binding protein highly concentrated in synapses, and Mint1, a binding partner with a vesicle trafficking protein.

**Uniprot ID:**

[Q9HAP6](#)

**NCBI:**

[NP\\_071448](#)

**GeneID:**

[64130](#)

**Species:**

Human

**Source:**

E. coli

**Format:**

**State:** Liquid purified protein

**Purity:** >90% by SDS - PAGE

**Buffer System:** 20 mM Tris-HCl buffer (pH 8.0) containing 0.2M NaCl, 50% glycerol, 2mM DTT

**Description:**

Recombinant human LIN7B protein, fused to His-tag at N-terminus, was expressed in E.coli and purified by using conventional chromatography techniques.

**AA Sequence:**

MGSSHHHHH SSGLVPRGSH MGSMAALVEP LGLERDVSRA VELLERLQRS GELPPQKLQA  
LQRVLQSRFC SAIREVYEQY YDTLDITGSA EIRAHATAKA TVAAFTASEG HAHPRVVELP  
KTDEGLGFNI MGGKEQNSPI YISRVIPGGV ADRHGGLKRG DQLLSVNGVS VEGEQHEKAV  
ELLKAAQGSV KLVVRYTPRV LEEMEARFEK MRSARRRQQH QSYSSLESRG

**Molecular weight:** 25.3 kDa (230aa) confirmed by MALDI-TOF

**Storage:**

Store undiluted at 2-8°C for one week or (in aliquots) at -20°C to -80°C for longer.

Avoid repeated freezing and thawing.

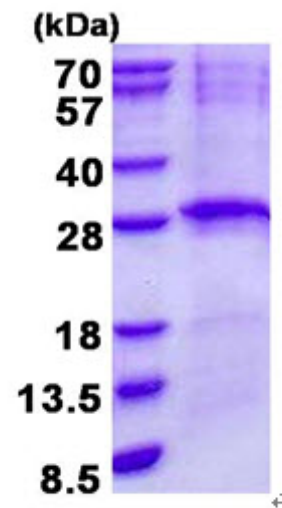
Shelf life: one year from despatch.

**General Readings:**

Okamoto M., et al. (1997) J Biol Chem. 272:31459-31464-293 Irie M., et al. (1999)

Oncogene. 18:2811-2817.

Pictures:



15% SDS-PAGE (3ug)