

**AR50642PU-S****Human CD314 / KLRK1 (73-216, His-tag) - Purified****Alternate names:**

D12S2489E, Killer cell lectin-like receptor subfamily K member 1, NK cell receptor D, NKG2-D type II integral membrane protein, NKG2-D-activating NK receptor, NKG2D

**Quantity:**

0.1 mg

**Concentration:**

0.5 mg/ml (determined by Bradford assay)

**Background:**

KLRK1 is an activating receptor that has recently generated considerable interest. The most intriguing of these are a pair of closely related proteins called MICA and MICB. These are cell-surface molecules distantly related to MHC class I proteins, and the genes possess elements of heat shock promoters. MICA and MICB, therefore, are expressed during cell stress and are up-regulated in tumor cells and during viral infections. This receptor-ligand combination may play a critical role in the immune response to a variety of pathologies.

**Uniprot ID:**

[P26718](#)

**NCBI:**

[NP\\_031386](#)

**GeneID:**

[100528032](#)

**Species:**

Human

**Source:**

E. coli

**Format:**

**State:** Liquid purified protein

**Purity:** >90% by SDS - PAGE

**Buffer System:** 20 mM Tris-HCl buffer (pH8.0) containing 10% glycerol 0.4M Urea

**Description:**

Recombinant human KLRK1 protein, fused to His-tag at N-terminus, was expressed in E.coli.

**AA Sequence:**

MGSSHHHHHH SGLVPRGSH MGSMIWSAVF LNSLFNQEVQ IPLTESYCGP CPKNWICYKN  
NCYQFFDESK NWYESQASCM SQNASLLKVY SKEDQDLLKL VKSYHWMGLV HIPTNGSWQW  
EDGSILSPNL LTIEMQKGD CALYASSFKG YIENCSTPNT YICMQRTV

**Molecular weight:** 19.2 kDa (168aa)

**Storage:**

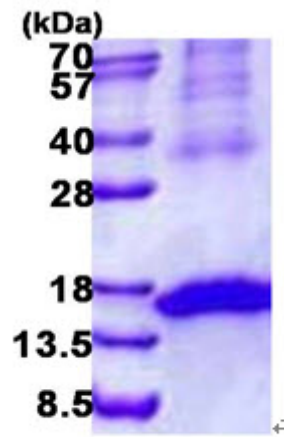
Store undiluted at 2-8°C for one week or (in aliquots) at -20°C to -80°C for longer.  
Avoid repeated freezing and thawing.

Shelf life: one year from despatch.

**General Readings:**

Guerra N. et al. (2008) Immunity. 28:571-580. Ravetch JV. et al. (2000) Science. 290:84-89.

Pictures:



15% SDS-PAGE (3ug)