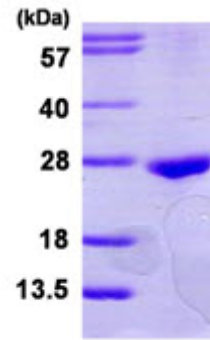


AR39152PU-N**Human RAB22A / RAB22 (1-194, His-tag) - Purified**

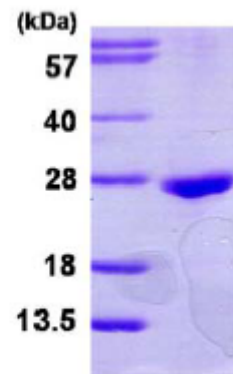
Alternate names:	Rab-22, Rab-22A, Ras-related protein Rab-22A
Quantity:	50 µg
Concentration:	0.25 mg/ml (determined by Bradford assay)
Background:	RAB22A, also known as ras-related protein Rab-22A, is a member of the RAB family of small GTPases. The GTP-bound form of the encoded protein has been shown to interact with early-endosomal antigen 1, and may be involved in the trafficking of and interaction between endosomal compartments.
Uniprot ID:	Q9UL26
NCBI:	NP_065724.1
GeneID:	57403
Species:	Human
Source:	E. coli
Format:	State: Liquid purified protein Purity: >95% by SDS - PAGE Buffer System: 20mM Tris-HCl buffer (pH8.0) containing 40% glycerol, 0.1M NaCl
Description:	Recombinant human RAB22A protein, fused to His-tag at N-terminus, was expressed in E.coli and purified by using conventional chromatography. AA Sequence: MGSSHHHHH SSGLVPRGSH MALRELKVCL LGDTGVGKSS IVWRFVEDSF DPNINPTIGA SFMTKTQYQ NELHKFLIWD TAGQERFRAL APMYRGSAA AIIYDITKE ETFSTLKNWV KELRQHGPEN IVVAIAGNKC DLIDVREVM RDAKDYADSI HAIFVETSAK NAININELFI EISRRIPSTD ANLPSGGKGF KLRRQPSEPK RSCC Molecular weight: 11 kDa (214aa), confirmed by MALDI-TOF
Storage:	Store undiluted at 2-8°C for up to two weeks or (in aliquots) at -20°C or -70°C for longer. Avoid repeated freezing and thawing. Shelf life: one year from despatch.
General Readings:	Choudhary C., et al. (2009) Science. 325:843-840. Opdam F.J.M., et al. (2000) Eur. J. Cell Biol. 79:308-316.

Pictures:

Recombinant human RAB22A, 1-194aa,
His-tagged



15% SDS-PAGE (3ug)



15% SDS-PAGE (3ug)