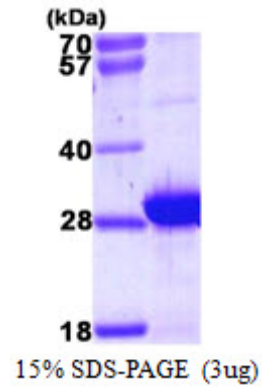


**AR39148PU-N****Human MYL6B (1-208, His-tag) - Purified**

<b>Alternate names:</b>	MLC1SA, Myosin light chain 1 slow-twitch muscle A isoform, Myosin light chain 6B, Smooth muscle and nonmuscle myosin light chain alkali 6B
<b>Quantity:</b>	0.1 mg
<b>Concentration:</b>	1.0 mg/ml (determined by Bradford assay)
<b>Background:</b>	MYL6B is a heavy chain regulator found in smooth muscle and non-muscle Myosin complexes. Contractile activity in smooth muscle is regulated by the calcium/calmodulin-dependent phosphorylation of Myosin light chain by Myosin light chain kinase. MYL6B does not bind calcium during contraction. It is primarily found in a hexamer consisting of four light chains and two heavy chains. It most commonly interacts with Myosin Va, an Actin based motor that can move in large steps. MYL6B is expressed in most tissues with neurons and smooth muscle tissue having the highest expression.
<b>Uniprot ID:</b>	<a href="#">P14649</a>
<b>NCBI:</b>	<a href="#">NP_001186558</a>
<b>GeneID:</b>	<a href="#">140465</a>
<b>Species:</b>	Human
<b>Source:</b>	E. coli
<b>Format:</b>	<b>State:</b> Liquid purified protein <b>Purity:</b> >95% <b>Buffer System:</b> 20mM Tris-HCl buffer (pH 8.0) containing 10% glycerol, 2mM DTT
<b>Description:</b>	Recombinant human MYL6B protein, fused to His-tag at N-terminus, was expressed in E.coli and purified by using conventional chromatography techniques. <b>AA Sequence:</b> MGSSHHHHHH SSGLVPRGSH MGSMPKDV PVKPPAGPSI SKPAKPAAA GAPPKTKAE PAVPQAPQKT QEPPVDLSKV VIEFNKDQLE EFKEAFELFD RVGDGKILYS QCGDVMRALG QNPTNAEVLK VLGPNKSDEL KSRRVDFETF LPMLQAVAKN RGQGTIEDYL EGFRVFDKEG NGKVMGAELR HVLTTLGEKM TEEEVETVLA GHEDSNGCIN YEAFKHLIS V <b>Molecular weight:</b> 25.2 kDa (231aa), confirmed by MALDI-TOF
<b>Storage:</b>	Store undiluted at 2-8°C for up to two weeks or (in aliquots) at -20°C or -70°C for longer. Avoid repeated freezing and thawing. Shelf life: one year from despatch.
<b>General Readings:</b>	Takeya K., et al. (2008) Am J Physiol Renal Physiol. 294(6):1487-92.

Pictures:



Recombinant human MYL6B, 1-208 aa,  
His-tagged

