

AR39088PU-L**Human RND1 / RHO6 (1-200, His-tag) - Purified****Alternate names:**

Rho family GTPase 1, Rho-related GTP-binding protein Rho6

Quantity:

0.5 mg

Concentration:

0.5 mg/ml (determined by Bradford assay)

Background:

RND1, also known as Rho 6, is Rho-related GTPases form a distinct branch of the Rho family, since they differ from other Rho proteins in size, charge, and biochemical properties. It appears to be constitutively in the activated GTP-bound form and acts as negative regulators of actin assembly and of cell adhesion. It contributes to regulating the organization of the actin cytoskeleton in response to extracellular growth factors.

Uniprot ID:[Q92730](#)**NCBI:**[NP_055285](#)**GeneID:**[27289](#)**Species:**

Human

Source:

E. coli

Format:**State:** Liquid purified protein**Purity:** >95%**Buffer System:** 20mM Tris-HCl buffer (pH 8.0) containing 30% glycerol, 0.1M NaCl, 1mM DTT**Description:**

Recombinant human RND1 protein, fused to His-tag at N-terminus, was expressed in E.coli and purified by using conventional chromatography.

AA Sequence:

MGSSHHHHHH SSGLVPRGSH MKERRAPQPV VARCKLVLVG DVQCGKTAML QVLAKDCYPE
TYVPTVFENY TACLETEEQR VELSLWDTSG SPYYDNVRPL CYSDSDAVLL CFDISRPETV
DSALKKWRTE ILDYCPSTRV LLIGCKTDLR TDLSTLMELS HQKQAPISYE QGCAIAKQLG
AEIYLEGSAF TSEKSIHSIF RTASMLCLNK PSPLPQKSPV

Molecular weight: 24.5 kDa (220aa), confirmed by MALDI-TOF (Molecular size on SDS-PAGE will appear higher).

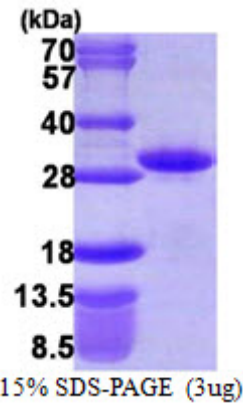
Storage:

Store undiluted at 2-8°C for up to two weeks or (in aliquots) at -20°C or -70°C for longer.

Avoid repeated freezing and thawing.

Shelf life: one year from despatch.

Pictures:



Recombinant human RND1, 1-200 aa, His-tagged

