

AR09996PU-L**Human RhoB (1-193, His-tag) - Purified****Alternate names:**

ARH6, ARHB, Rho cDNA clone 6, Rho-related GTP-binding protein RhoB

Quantity:

0.25 mg

Concentration:

0.25 mg/ml (determined by Bradford assay)

Background:

Rho-related GTP-binding protein RhoB, also known as RhoB, is a member of the Rho GTP-binding protein family. RhoB mediates apoptosis in neoplastically transformed cells after DNA damage. It plays a negative role in tumorigenesis as deletion causes tumor formation.

Uniprot ID:[P62745](#)**NCBI:**[NP_004031](#)**GeneID:**[388](#)**Species:**

Human

Source:

E. coli

Format:**State:** Liquid purified protein**Purity:** >90%**Buffer System:** 20mM Tris-HCl buffer (pH 8.0) containing 2mM DTT, 20% glycerol, 0.2mM NaCl**Description:**

Recombinant human RhoB protein, fused to His-tag at N-terminus, was expressed in E.coli and purified by using conventional chromatography techniques.

AA Sequence:

MGSSHHHHHH SSGLVPRGSH MAAIRKKLVV VGDGACGKTC LLIVFSKDEF PEVYVPTVFE
NYVADIEVDG KQVELALWDT AGQEDYDRLR PLSYPDTDVI LMCFSVDSPD SLENIPEKWW
PEVKHFPCNV PIILVANKKD LRSDEHVRTE LARMKQEPVR TDDGRAMAVR IQAYDYLECS
AKTKEGVREV FETATRAALQ KRYGSQNGCI NCC

Molecular weight: 23.9 kDa (213aa), confirmed by MALDI-TOF (Molecular weight on SDS-PAGE will appear higher).

Storage:

Store undiluted at 2-8°C for up to two weeks or (in aliquots) at -20°C or -70°C for longer.

Avoid repeated freezing and thawing.

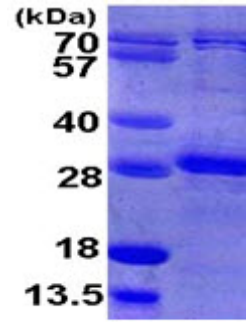
Shelf life: one year from despatch.

General Readings:

Wennerberg K., et al. (2004) Journal of cell science 117 (Pt 8): 1301–12.

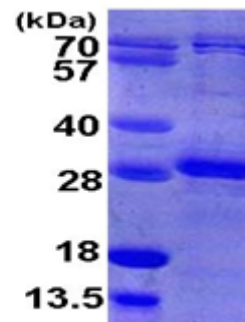
Wherlock M., et al (2004) J. Cell Sci. 117:3221-3231.

Pictures:



15% SDS-PAGE (3ug)

Recombinant human RhoB, 1-193aa, His-tagged



15% SDS-PAGE (3ug)