

AR09994PU-L**Human SPSB1 (24-233, His-tag) - Purified****Alternate names:**

SPRY domain-containing SOCS box protein 1, SSB-1, SSB1

Quantity:

0.25 mg

Concentration:

1.0 mg/ml (determined by Bradford assay)

Background:

SPRY domain-containing SOCS box protein 1 (SPSB1), also known as SSB1, is a member of the SOCS box protein subfamily. This protein contains a central SPRY domain and a C-terminal SOCS box. Although some of the SOCS protein subfamilies function as adaptors for a large family of ubiquitin-protein isopeptide ligases to regulate certain signaling pathways, the function of the SSB subfamily remains to be determined. SPSB1 may play an important role in enhancing the HGF-induced Erk-Elk-1-SRE pathway. Over expression of SPSB1 exhibited no effect on the basal level or epidermal growth factor-induced SRE-luciferase activity.

Uniprot ID:[Q96BD6](#)**NCBI:**[NP_079382](#)**GeneID:**[80176](#)**Species:**

Human

Source:

E. coli

Format:**State:** Liquid purified protein**Purity:** >90%**Buffer System:** 20mM Tris-HCl buffer (pH 8.0) containing 1mM DTT, 30% glycerol, 0.1M NaCl**Description:**

Recombinant human SPSB1 protein, fused to His-tag at N-terminus, was expressed in E.coli and purified by using conventional chromatography techniques.

AA Sequence:

MGSSHHHHHH SSGLVPRGSH MQELQGLDYC KPTRLDLLLD MPPVSYDVQL LHSWNNNDRS
LNVFVKEDDK LIFHRHPVAQ STDAIRGKVG YTRGLHVWQI TWAMRQRGTH AVVGVATADA
PLHSVGYTTL VGNNHESGW DLGRNRLYHD GKNQPSKTYP AFLEPDETFI VPDSFLVALD
MDDGTLSFIV DGQYMGVAFR GLKGKKLYPV VSAVWGHC EI RMRYLNGLDP E

Molecular weight: 26.1 kDa (231aa) confirmed by MALDI-TOF**Storage:**

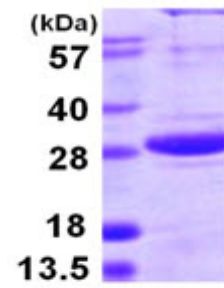
Store undiluted at 2-8°C for up to two weeks or (in aliquots) at -20°C or -70°C for longer.

Avoid repeated freezing and thawing.

Shelf life: one year from despatch.

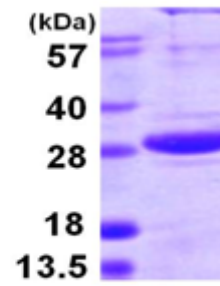
General Readings:Woo J S., et al. (2006) *Eqb.* 25(6):1353-63.Wang D., et al. (2005) *J Biol Chem.* 280(16):16393-401.

Pictures:



Recombinant human SPSB1, 24-233 aa,
His-tagged

15% SDS-PAGE (3ug)



15% SDS-PAGE (3ug)