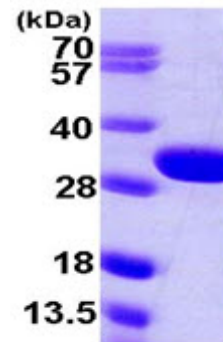


AR09993PU-N**E. coli Glutaminase 1 / glsA1 (1-310, His-tag) - Purified**

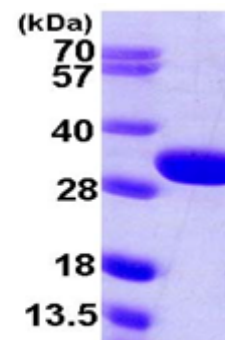
Alternate names:	JW0474, b0485, ybaS
Quantity:	0.1 mg
Concentration:	1.0 mg/ml (determined by Bradford assay)
Background:	GlsA1 (glutaminase1) belongs to the large superfamily of serine-dependent beta-lactamases and penicillin-binding proteins. They are present in most bacteria and eukaryotes and catalyze the hydrolytic deamidation of l-glutamine to l-glutamate and free NH ₄ ⁺ .
Uniprot ID:	P77454
NCBI:	AP_001134
GeneID:	946187
Species:	E. coli
Source:	E. coli
Format:	State: Liquid purified protein Purity: >95% Buffer System: 20mM Tris-HCl buffer (pH 8.0) containing 1mM DTT, 10% glycerol, 100mM NaCl
Description:	Recombinant E.coli glsA1 protein, fused to His-tag at N-terminus, was expressed in E.coli and purified by using conventional chromatography techniques. AA Sequence: <u>MGSSHHHHHH SSGLVPRGSH</u> MLDANKLQQA VDQAYTQFHS LNKGQNADYI PFLANVPGQL AAVAIVTCDG NVYSAGDSY RFALESISKV CTLALALEDV GPQAVQDKIG ADPTGLPFNS VIALELHGK PLSPVLNAGA IATTSLINAE NVEQRWQRIL HIQQQLAGEQ VALSDEVNQS EQTTNFHNRA IAWLLYSAGY LYCDAMEACD VYTRQCSTLL NTIELATLGA TLAAGGVNPL THKRVLQADN VPYILAEMMM EGLYGRSGDW AYRVGLPGKS GVGGGILAVV PGVMGIAAFS PPLDEDGNSV RGQKMASVA KQLGYNVFKG Molecular weight: kDa (330aa), confirmed by MALDI-TOF
Storage:	Store undiluted at 2-8°C for up to two weeks or (in aliquots) at -20°C or -70°C for longer. Avoid repeated freezing and thawing. Shelf life: one year from despatch.
General Readings:	Brown G., et al. (2008) Biochemistry. 47(21):5724-35. Nandakumar R., et al. (2003) J. Mol. Catal. B: Enzymes. 23:87-100.

Pictures:



15% SDS-PAGE (3ug)

Recombinant E.coli glsA1, 1-310aa, His-tagged



15% SDS-PAGE (3ug)