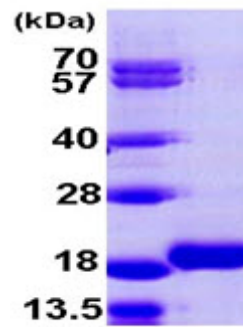


**AR09979PU-N****Human MAP1LC3B2 (1-120, His-tag) - Purified**

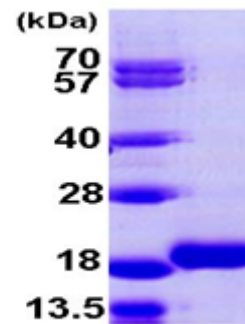
<b>Alternate names:</b>	Microtubule-associated proteins 1A/1B light chain 3 beta 2
<b>Quantity:</b>	0.1 mg
<b>Concentration:</b>	1.0 mg/ml (determined by Bradford assay)
<b>Background:</b>	Microtubule-associated proteins 1A/1B light chain 3 beta 2, also as known as MAP1LC3B2, belongs to the MAP1LC3 family. MAP1LC3B2 is a subunit of neuronal microtubule-associated MAP1A and MAP1B proteins, which are involved in microtubule assembly and important for neurogenesis. This protein probably involved in formation of autophagosomal vacuoles (autophagosomes). It is expressed primarily in heart, testis, brain and skeletal muscle and testis.
<b>Uniprot ID:</b>	<a href="#">A6NCE7</a>
<b>NCBI:</b>	<a href="#">NP_001078950</a>
<b>GeneID:</b>	<a href="#">643246</a>
<b>Species:</b>	Human
<b>Source:</b>	E. coli
<b>Format:</b>	<b>State:</b> Liquid purified protein <b>Purity:</b> >95% <b>Buffer System:</b> 20mM Tris-HCl buffer (pH 8.0) containing 1mM DTT, 10% glycerol, 0.1M NaCl
<b>Description:</b>	Recombinant human MAP1LC3B2 protein, fused to His-tag at N-terminus, was expressed in E.coli and purified by using conventional chromatography techniques. <b>AA Sequence:</b> <u>MGSSHHHHHH</u> <u>SSGLVPRGSH</u> MPSEKTFKQR RTFEQRVEDV RLIREQHPTK IPVIIERYKG EKQLPVLDKT KFLVPDHVNM SELIKIIRRR LQLNANQAFF LLVNGHSMVS VSTPISEVYE SEKDEDGFLY MVCASQETFG <b>Molecular weight:</b> 16.2 kDa (140aa) confirmed by MALDI-TOF
<b>Storage:</b>	Store undiluted at 2-8°C for up to two weeks or (in aliquots) at -20°C or -70°C for longer. Avoid repeated freezing and thawing. Shelf life: one year from despatch.
<b>General Readings:</b>	He H., et al. (2003) J. Biol. Chem. 278:29278-29287. Seidenbecher C.I., et al. (2004) J. Mol. Biol. 336:957-970.

Pictures:



15% SDS-PAGE (3ug)

Recombinant human MAP1LC3B2, 1-120 aa, His-tagged



15% SDS-PAGE (3ug)