

AR09959PU-N**Human MIP1 alpha / CCL3 (24-92, His-tag) - Purified****Alternate names:**

C-C motif chemokine 3, CCL-3, G0/G1 switch regulatory protein 19-1, G0S19-1 protein, LD78 alpha, MIP-1-alpha, MIP1A, Macrophage Inflammatory Protein 1 alpha, SCYA3, Small-inducible cytokine A3, Tonsillar lymphocyte LD78 alpha protein

Quantity:

50 µg

Background:

Macrophage inflammatory protein-1alpha (MIP1 alpha, CCL3) is a cytokine belonging to the CC chemokine family that is involved in the acute inflammatory state in the recruitment and activation of polymorphonuclear leukocytes. This protein has been identified as one of the major HIV-SFs produced by CD8+ T cells, along with MIP-1beta and RANTES. It acts as an inhibitor of different strains of HIV-1, HIV-2 and SIV infection in a dose-dependent manner.

Uniprot ID:

[P10147](#)

NCBI:

[NP_002974](#)

GeneID:

[6348](#)

Species:

Human

Source:

E. coli

Format:

State: Liquid purified peptide

Purity: >90%

Buffer System: 10mM Sodium Citrate (pH 3.5) containing 10% glycerol

Endotoxin Level: < 1.0 EU per 1 µg of protein (determined by LAL method)

Description:

Recombinant human CCL3, fused to His-tag at N-terminus, was expressed in E.coli and purified by conventional chromatography, after refolding of the isolated inclusion bodies in a renaturation buffer.

AA Sequence:

MGSSHHHHHH SSGLVPRGSH MSLAADTPTA CCFSYTSRQI PQNFIADYFE TSSQCSKPGV
IFLTKRSRQV CADPSEEWVQ KYVSDLELSA

Molecular weight: kDa (90aa), confirmed by MALDI-TOF (Molecular weight on SDS-PAGE will appear higher).

Storage:

Store undiluted at 2-8°C for up to two weeks or (in aliquots) at -20°C or -70°C for longer.

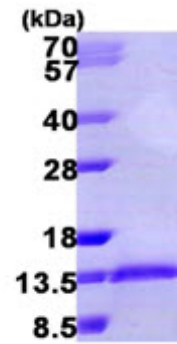
Avoid repeated freezing and thawing.

Shelf life: one year from despatch.

General Readings:

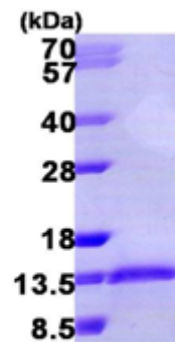
Guan E, et al. (2001) J Biol Chem. 276:12404-9.

Pictures:



15% SDS-PAGE (3ug)

Recombinant human CCL3, 24-92 aa, His-tagged



15% SDS-PAGE (3ug)