

AR09948PU-N**Human SEC13 (1-322, His-tag) - Purified****Alternate names:**

D3S1231E, Protein SEC13 homolog, SEC13-like protein 1, SEC13-related protein, SEC13L1, SEC13R

Quantity:

0.1 mg

Concentration:

0.5 mg/ml (determined by Bradford assay)

Background:

SEC13 belongs to the SEC13 family of WD-repeat proteins. It is a constituent of the endoplasmic reticulum and the nuclear pore complex. It has similarity to the yeast SEC13 protein, which is required for vesicle biogenesis from endoplasmic reticulum during the transport of proteins. This protein interacts with SEC31A and SEC31B. SEC31A was found to colocalize with SEC13, one of the other components of COPII, in the subcellular structures corresponding to the vesicle transport function.

Uniprot ID:[P55735](#)**NCBI:**[NP_001129704](#)**GeneID:**[6396](#)**Species:**

Human

Source:

E. coli

Format:**State:** Liquid purified protein**Purity:** >95%**Buffer System:** 20mM Tris-HCl buffer (pH 8.0) containing 1mM DTT, 10% glycerol, 100mM NaCl**Description:**

Recombinant human SEC13 protein, fused to His-tag at N-terminus, was expressed in E.coli and purified by using conventional chromatography techniques.

AA Sequence:

MGSSHHHHHH SSGLVPRGSH MVSVINTVDT SHEDMIHDAQ MDYYGTRLAT CSSDRSVKIF
DVRNGGQILI ADLRGHEGPV WQVAWAHPMY GNILASCSYD RKVIIWREEN GTWEKSHEHA
GHDSSVNSVC WAPHDYGLIL ACGSSDGAIS LLTYTGEGQW EVKKINNAHT IGCNAVSWAP
AVVPGSLIDH PSGQKPNYIK RFASGGCDNL IKLWKEEDG QWKEEQKLEA HSDWVRDVAW
APSIGLPTST IASCSQDGRV FIWTCDDASS NTWSPKLLHK FNDVVVHVSWSITANILAVS
GGDNKVTWLK ESDVGQWVCI SDVNKGQGSV SASVTEGQQN EQ

Molecular weight: 37.7 kDa (342aa), confirmed by MALDI-TOF**Storage:**

Store undiluted at 2-8°C for up to two weeks or (in aliquots) at -20°C or -70°C for longer.

Avoid repeated freezing and thawing.

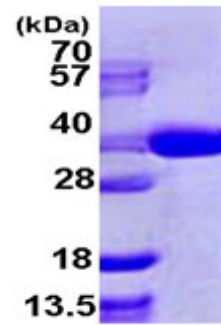
Shelf life: one year from despatch.

General Readings:

Stankewich M.C., et al. (2006) J. Cell Sci. 119:958-969.

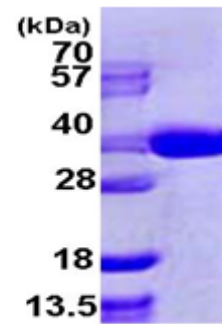
Yamasaki A., et al. (2007) Mol. Biol. Cell 17:4876-4887.

Pictures:



15% SDS-PAGE (3ug)

Recombinant human SEC13, 1-322aa, His-tagged



15% SDS-PAGE (3ug)