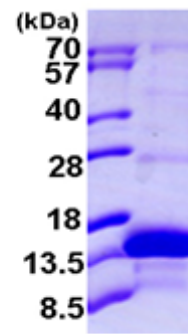


AR09944PU-N**Human KAAG1 (1-84, His-tag) - Purified**

Alternate names:	Kidney-associated antigen 1, RU2 antisense gene protein, RU2AS
Quantity:	50 µg
Concentration:	0.5 mg/ml (determined by BCA assay)
Background:	Kidney associated antigen 1, also known as KAAG1, is expressed in testis and kidney, and, at lower levels, in urinary bladder and liver, and it is expressed by a high proportion of tumors of various histologic origin, including melanomas, sarcomas and colorectal carcinomas.
Uniprot ID:	Q9UBP8
NCBI:	NP_851854
GeneID:	353219
Species:	Human
Source:	E. coli
Format:	State: Liquid purified protein Purity: >90% by SDS - PAGE Buffer System: 20mM Tris-HCl buffer (pH 8.0) containing 1mM DTT, 10% glycerol, 100mM NaCl
Description:	Recombinant human KAAG1 protein, fused to His-tag at N-terminus, was expressed in E.coli and purified by using conventional chromatography techniques. AA Sequence: <u>MGSSHHHHHH SSGLVPRGSH</u> MDDDAAPRVE GVPVAVHKHA LHDGLRQVAG PGAAAAHLPR WPPPQLAASR REAPPLSQRP HRTQGAGSPP ETNEKLTNPQ VKEK Molecular weight: 11.1 kDa (104aa), confirmed by MALDI-TOF
Storage:	Store undiluted at 2-8°C for up to two weeks or (in aliquots) at -20°C or -70°C for longer. Avoid repeated freezing and thawing. Shelf life: one year from despatch.
General Readings:	1. Van den Eynde B.J., et al. (1999) J. Exp. Med. 190:1793-1800. 2. Mungall A.J., et al. (2003) Nature 425:805-811.

Pictures:

Recombinant human KAAG1, 1-84aa, His-tagged



15% SDS-PAGE (3ug)