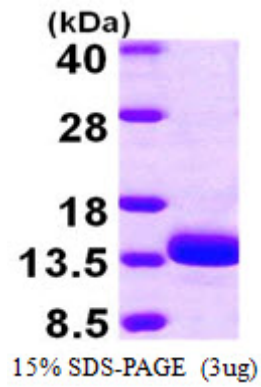


AR09890PU-L**Human TSTD1 (1-115, His-tag) - Purified**

Alternate names:	KAT, Thiosulfate sulfurtransferase/rhodanese-like domain-containing protein 1
Quantity:	0.25 mg
Concentration:	1.0 mg/ml (determined by Bradford assay)
Background:	Thiosulfate sulfurtransferase like domain containing 1, also known as TSTD1, belongs to the family of transferases, specifically the sulfurtransferases, which transfer sulfur-containing groups. The TSTD1 protein is localized around the nuclear membranes. It is expressed in several human tissues, including kidney, liver, skeletal muscle, heart, colon, thymus, spleen, placenta and lung. The TSTD1 protein may play roles in cyanide detoxification, the formation of iron-sulfur proteins, and the modification of sulfur-containing enzymes.
Uniprot ID:	Q8NFU3
NCBI:	NP_001106676
GeneID:	100131187
Species:	Human
Source:	E. coli
Format:	State: Liquid purified protein Purity: >95% Buffer System: 20mM Tris-HCl buffer (pH 8.0) containing 1mM DTT, 10% glycerol, 100mM NaCl
Description:	Recombinant human TSTD1 protein, fused to His-tag at N-terminus, was expressed in E.coli and purified by using conventional chromatography techniques. AA Sequence: MGSSHHHHHH SSGLVPRGSH MAGAPTVSLP ELRSLLASGR ARLFDVRSRE EAAAGTIPGA LNIPVSELES ALQMEPAAFQ ALYSAEKPKL EDEHLVFFCQ MGKRGLQATQ LARSLGYTGA RNYAGAYREW LEKES Molecular weight: 14.6 kDa (135aa) confirmed by MALDI-TOF
Storage:	Store undiluted at 2-8°C for up to two weeks or (in aliquots) at -20°C or -70°C for longer. Avoid repeated freezing and thawing. Shelf life: one year from despatch.
General Readings:	Wenzel K., et al. (2003) Biol Chem. 3846:763-75. Matthies A., et al. (2004) Proc Natl Acad Sci USA. 101:5946-5951.

Pictures:



Recombinant human TSTD1, 1-115aa, His-tagged

