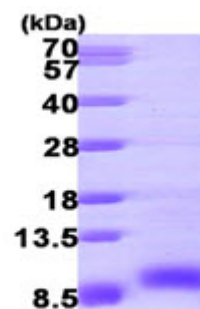


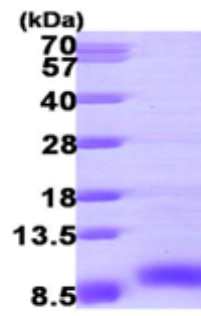
**AR09776PU-N****Human Insulin-like growth factor II / IGF2 (25-91) - Purified**

|                          |  |
|--------------------------|--|
| <b>Alternate names:</b>  | IGF-II, Somatomedin-A  |
| <b>Quantity:</b>         | 50 µg  |
| <b>Concentration:</b>    | 0.25 mg/ml (determined by Bradford assay)  |
| <b>Background:</b>       | IGF2, as known as insulin-like growth factor 2, is mitogenic polypeptide growth factors that stimulate the proliferation and survival of various cell types including muscle, bone, and cartilage tissue in vitro. This protein is a fetal growth factor, influenced by placental lactogen and abundantly expressed by placental trophoblasts.     |
| <b>Uniprot ID:</b>       | <a href="#">P01344</a>   |
| <b>NCBI:</b>             | <a href="#">NP_000603</a>  |
| <b>GeneID:</b>           | <a href="#">3481</a>   |
| <b>Species:</b>          | Human  |
| <b>Source:</b>           | E. coli  |
| <b>Format:</b>           | <b>State:</b> Liquid purified peptide<br><b>Purity:</b> >90%<br><b>Buffer System:</b> PBS (pH 7.4) containing 10% glycerol   |
| <b>Description:</b>      | Recombinant human IGF2 was expressed in E.coli and purified by conventional chromatography, after refolding of the isolated inclusion bodies in a renaturation buffer.<br><b>AA Sequence:</b><br>MAYRPSSETLC GGELVDTLQF VCGDRGFYFS RPASRVSRRS RGIVEECCFR SCDLALLETY<br>CATPAKSE<br><b>Molecular weight:</b> 7.6 kDa (68aa), confirmed by MALDI-TOF |
| <b>Storage:</b>          | Store undiluted at 2-8°C for up to two weeks or (in aliquots) at -20°C or -70°C for longer.<br>Avoid repeated freezing and thawing.<br>Shelf life: one year from despatch.   |
| <b>General Readings:</b> | Pedersen S.K., et al. (2002). Biochem. J. 363: 37-44.  |
| <b>Pictures:</b>         |  |



15% SDS-PAGE (3µg)

Recombinant human IGF2, 25-91 aa



15% SDS-PAGE (3ug)