

AR09774PU-N**Human ROBLD3 (1-125, His-tag) - Purified****Alternate names:**

Endosomal adaptor protein p14, HSPC003, Late endosomal/lysosomal Mp1-interacting protein, MAPBPIP, Mitogen-activated protein-binding protein-interacting protein, Roadblock domain-containing protein 3

Quantity:

0.1 mg

Concentration:

1.0 mg/ml (determined by Bradford assay)

Background:

ROBLD3, also known as MAPBPIP, belongs to the GAMAD family. It is an adapter protein that enhances the efficiency of the MAP kinase cascade and facilitates the activation of MAPK2. ROBLD3 compels the recruitment of MP1 to late endosomes where they form a very stable heterodimeric complex required for ERK activation on endosomes.

Uniprot ID:

[Q9Y2Q5](#)

NCBI:

[NP_054736](#)

GeneID:

[28956](#)

Species:

Human

Source:

E. coli

Format:

State: Liquid purified protein

Purity: >95%

Buffer System: 20 mM Tris-HCl buffer (pH 8.0) containing 0.2M NaCl, 2mM DTT, 10% glycerol

Description:

Recombinant human ROBLD3 protein, fused to His-tag at N-terminus, was expressed in E.coli and purified by using conventional chromatography techniques.

AA Sequence:

MGSSHHHHHH SSGLVPRGSH MGSMLRPKA LTQVLSQANT GGVQSTLLL N NEGSL LAYSG
YGD TDARVTA AIASNIWAAY DRNGNQAFNE DNLK FILMDC MEGRVAITRV ANLLLCMYAK
ETVGF GMLKA KAQALVQYLE EPLTQVAAS

Molecular weight: 16 kDa (149aa), confirmed by MALDI-TOF

Storage:

Store undiluted at 2-8°C for up to two weeks or (in aliquots) at -20°C or -70°C for longer.

Avoid repeated freezing and thawing.

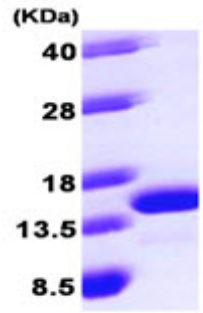
Shelf life: one year from despatch.

General Readings:

Sancak Y., et al. (2010) Cell. 141(2):290-303.

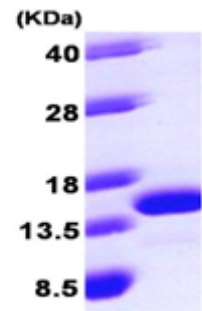
Waters S., et al. (2009) FEBS Lett. 583(12):1846-52.

Pictures:



15% SDS-PAGE (3ug)

Recombinant human ROBLD3, 1-125 aa,
His-tagged



15% SDS-PAGE (3ug)