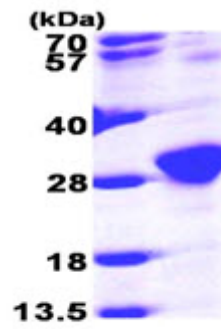


**AR09771PU-N****Human RAB6A / RAB6 (1-208, His-tag) - Purified**

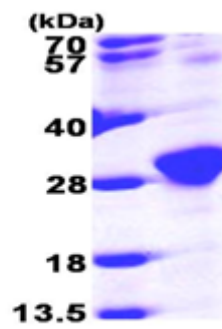
<b>Alternate names:</b>	Rab-6, Rab-6A, Ras-related protein Rab-6A
<b>Quantity:</b>	50 µg
<b>Concentration:</b>	1.0 mg/ml (determined by Bradford assay)
<b>Background:</b>	RAB6A belongs to the small GTPase superfamily. It may be involved in protein transport. It is a regulator of membrane traffic from the Golgi apparatus towards the endoplasmic reticulum (ER) and has a low GTPase activity.
<b>Uniprot ID:</b>	<a href="#">P20340</a>
<b>NCBI:</b>	<a href="#">NP_002860</a>
<b>GeneID:</b>	<a href="#">5870</a>
<b>Species:</b>	Human
<b>Source:</b>	E. coli
<b>Format:</b>	<b>State:</b> Liquid purified protein <b>Purity:</b> >90% <b>Buffer System:</b> 20mM Tris buffer (pH 8.0) containing 10% glycerol, 1mM DTT, 0.1M NaCl
<b>Description:</b>	Recombinant human RAB6A protein, fused to His-tag at N-terminus, was expressed in E.coli and purified by using conventional chromatography techniques. <b>AA Sequence:</b> <u>MGSSHHHHHH SSGLVPRGSH MGS</u> H MSTGGD FGNPLRKFKL VFLGEQSVGK TSLITRFMYD SFDNTYQATI GIDFLSKTMY LEDRTIRLQL WDTAGQERFR SLIPSYIRDS AA AVVVYDIT NVNSFQQTK WIDDV RTERG SDVIIMLVGN KTDLADKRQV SIEEGERKAK ELNVMFIETS AKAGYNVKQL FRRVAAALPG MESTQDRSRE DMIDIKLEKP QEQPVSEGGC SC <b>Molecular weight:</b> 26.1 kDa (232aa), confirmed by MALDI-TOF
<b>Storage:</b>	Store undiluted at 2-8°C for up to two weeks or (in aliquots) at -20°C or -70°C for longer. Avoid repeated freezing and thawing. Shelf life: one year from despatch.
<b>General Readings:</b>	Wanschers B., et al. (2008) Cell Motil Cytoskeleton. 65(3):183-96. Burguete AS., et al. (2008) Cell. 132(2):286-98.

Pictures:



15% SDS-PAGE (3ug)

Recombinant human RAB6A, 1-208 aa,  
His- tagged



15% SDS-PAGE (3ug)