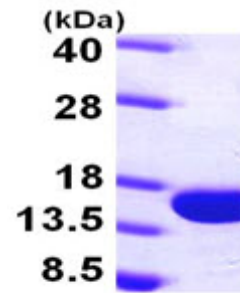


AR09718PU-L**Human Parvalbumin alpha / PVALB (1-110, His-tag) - Purified**

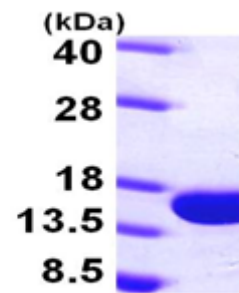
Quantity:	0.5 mg
Concentration:	1.0 mg/ml (determined by Bradford assay)
Background:	Parvalbumin alpha, also known PVALB, belongs to a larger group of EF hand proteins. It is a high affinity calcium ion-binding protein that is structurally and functionally similar to calmodulin and troponin C. Parvalbumin is expressed in a specific population of GABAergic interneurons which are thought to play a role in maintaining the balance between excitation and inhibition in the cortex as well as the hippocampus.
Uniprot ID:	P20472
NCBI:	NP_002845
GenID:	5816
Species:	Human
Source:	E. coli
Format:	State: Liquid purified protein Purity: >95% Buffer System: 20mM Tris-HCl buffer (pH 8.0) containing 1mM DTT, 10% glycerol, 50mM NaCl
Description:	Recombinant human PVALB protein, fused to His-tag at N-terminus, was expressed in E.coli and purified by using conventional chromatography techniques. AA Sequence: <u>MGSSHHHHHH SSGLVPRGSH MGSMSMTDL LNAEDIKKAV GAFSATDSFD</u> HKKFFQMVGLKKKSADDVKK VFHMLDKDKS GFIEDELGF ILKGFSPDAR DLSAKETKML MAAGDKDGDG KIGVDEFSTL VAES Molecular weight: 14.6 kDa (134aa) confirmed by MALDI-TOF
Storage:	Store undiluted at 2-8°C for up to two weeks or (in aliquots) at -20°C or -70°C for longer. Avoid repeated freezing and thawing. Shelf life: one year from despatch.
General Readings:	Klausberqer T., et al. (2005) J Neurosci. 25(42):9782-93.

Pictures:



15% SDS-PAGE (3ug)

Recombinant human PVALB, 1- 110 aa,
His-tagged



15% SDS-PAGE (3ug)