

AR09713PU-N**Human PFDN2 (1-154, His-tag) - Purified****Alternate names:**

HSPC231, PFD2, Prefoldin subunit 2

Quantity:

50 µg

Concentration:

0.5 mg/ml (determined by Bradford assay)

Background:

PFDN2 (Prefoldin subunit 2) is a member of the prefoldin beta subunit family. The encoded protein is one of six subunits of prefoldin, a molecular chaperone complex that binds and stabilizes newly synthesized polypeptides, thereby allowing them to fold correctly. This protein binds specifically to cytosolic chaperonin (c-CPN) and transfers target proteins to it. And binds to nascent polypeptide chain and promotes folding in an environment in which there are many competing pathways for nonnative proteins.

Uniprot ID:[Q9UHV9](#)**NCBI:**[NP_036526](#)**GeneID:**[5202](#)**Species:**

Human

Source:

E. coli

Format:**State:** Liquid purified protein**Purity:** >90%**Buffer System:** 20mM Tris-HCl buffer (pH8.0) containing 10% glycerol, 1mM DTT, 50mM NaCl**Description:**

Recombinant human PFDN2 protein, fused to His-tag at N-terminus, was expressed in E.coli and purified by using conventional chromatography techniques.

AA Sequence:

MGSSHHHHHH SSGLVPRGSH MAENSGRAGK SSGSGAGKGA VSAEQVIAGF NRLRQEQRGL
ASKAAELEME LNEHSLVIDT LKEVDETRKC YRMVGGVLVE RTVKEVLPAL ENNKEQIQKI
IETLTQQLQA KGKELNEFRE KHNIRLMGED EKPAAKENSE GAGAKASSAG VLVS

Molecular weight: 18.8 kDa (174aa) confirmed by MALDI-TOF**Storage:**

Store undiluted at 2-8°C for up to two weeks or (in aliquots) at -20°C or -70°C for longer.

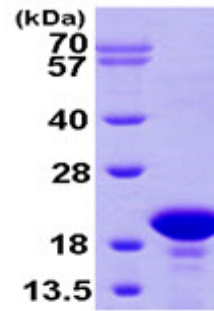
Avoid repeated freezing and thawing.

Shelf life: one year from despatch.

General Readings:

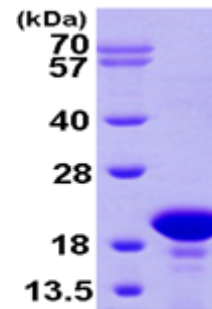
Grebenová D., et al. (2006) Blood Cells Mol. Dis. 37(3):210-7.

Pictures:



15% SDS-PAGE (3ug)

Recombinant human PFDN2, 1-154aa, His-tagged



15% SDS-PAGE (3ug)