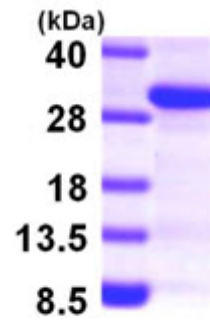


**AR09698PU-L****Human SCAND1 (1-179, His-tag) - Purified**

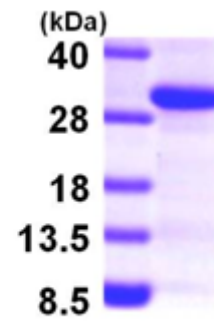
<b>Alternate names:</b>	SCAN domain-containing protein 1, SCAND-1, SDP1
<b>Quantity:</b>	0.25 mg
<b>Concentration:</b>	1.0 mg/ml (determined by Bradford assay)
<b>Background:</b>	SCAN domain-containing protein 1, also known SCAND1, belongs to a family of genes that encode an isolated SCAN domain. SCAND1 contains one SCAN box domain and, unlike the majority of other SCAN domain containing proteins, it does not contain a zinc finger motif. SCAND1 is a nuclear protein that may play a role in the mechanism of transcription regulation. It is widely expressed with highest levels of expression found in kidney, thyroid, liver, prostate and testis.
<b>Uniprot ID:</b>	<a href="#">P57086</a>
<b>NCBI:</b>	<a href="#">NP_057642</a>
<b>GeneID:</b>	<a href="#">51282</a>
<b>Species:</b>	Human
<b>Source:</b>	E. coli
<b>Format:</b>	<b>State:</b> Liquid purified protein <b>Purity:</b> >90% <b>Buffer System:</b> 20mM Tris-HCl buffer (pH 8.0) containing 1mM DTT, 10% glycerol, 100mM NaCl
<b>Description:</b>	Recombinant human SCAND1 protein, fused to His-tag at N-terminus, was expressed in E.coli and purified by using conventional chromatography techniques. <b>AA Sequence:</b> <u>MGSSHHHHHH</u> <u>SSGLVPRGSH</u> MAATEPILAA TGSPAAVPPE KLEGAGSSSA PERNCVGSLL PEASPPAPEP SSPNAAVPEA IPTPRAAASA ALELPLGPAP VSVAPQAEAE ARSTPGPAGS RLGPETFRQR FRQFRYQDAA GPREFRQLR ELSRQWLRPD IRTKEQIVEM LVQEQLLAIL PEAARARRIR RRTDVRLTG <b>Molecular weight:</b> 21.2 kDa kDa (199aa) confirmed by MALDI-TOF (molecular size on SDS-PAGE will appear higher).
<b>Storage:</b>	Store undiluted at 2-8°C for up to two weeks or (in aliquots) at -20°C or -70°C for longer. Avoid repeated freezing and thawing. Shelf life: one year from despatch.
<b>General Readings:</b>	Schumacher C., et al. (2000) J Biol Chem. 275:17173-17179. Sander T., et al. (2000) J Biol Chem. 275:12857-12767.

Pictures:



15% SDS-PAGE (3ug)

Recombinant human SCAND1, 1- 179 aa,  
His-tagged



15% SDS-PAGE (3ug)