

AR09691PU-N**Human Cullin 1 (1-410, His-tag) - Purified****Alternate names:**

CUL-1, CUL1, Cullin-1

Quantity:

50 µg

Concentration:

1.0 mg/ml (determined by Bradford assay)

Background:

Cullin1, also known CUL1, is a core component of multiple cullin-RING-based SCF (SKP1-CUL1-F-box protein) E3 ubiquitin-protein ligase complexes, which mediate the ubiquitination of proteins involved in cell cycle progression, signal transduction and transcription. In the SCF complex, it serves as a rigid scaffold that organizes the SKP1-F-box protein and RBX1 subunits. Cullin1 may contribute to catalysis through positioning of the substrate and the ubiquitin-conjugating enzyme.

Uniprot ID:[Q13616](#)**NCBI:**[NP_003583](#)**GeneID:**[8454](#)**Species:**

Human

Source:

E. coli

Format:**State:** Liquid purified protein**Purity:** >95%**Buffer System:** 20mM Tris-HCl buffer (pH 8.0) containing 1mM DTT, 10% glycerol, 100mM NaCl**Description:**

Recombinant human CUL1 protein, fused to His-tag at N-terminus, was expressed in E.coli and purified by using conventional chromatography techniques.

AA Sequence:

MGSSHHHHHH SSGLVPRGSH MSSTRSQNPH GLKQIGLDQI WDDLRAIQQ VYTRQSMAS
RYMELYTHVY NYCTSVHQSN QARGAGVPPS KSKKGQTPGG AQFVGLLELYK RLKEFLKNNYL
TNLLKDGEDL MDESVLKFYT QWEDYRFSS KVLNGICAYL NRHWVRECD EGRKGIYEIY
SLALVTWRDC LFRPLNKQVT NAVLKLIEKE RNGETINTRL ISGVVQSYVE LGLNEDDAFA
KGPTLTVYKE SFESQFLADT ERFYTRESTE FLQQNPVTEY MKKAEARLLE EQRRVQVYLH
ESTQDELARK CEQVLEKHL EIFHTEFQNL LDADKNEDLG RMYNLVSRIQ DGLGELKLLL
ETHIHNQGLA AIEKCGEAL NDPKMYVQTV LDVHKYNAL VMSAFNNDAG FVAALDKACG
RFINNNAVTK

Molecular weight: 49.4 kDa (430aa) confirmed by MALDI-TOF**Storage:**

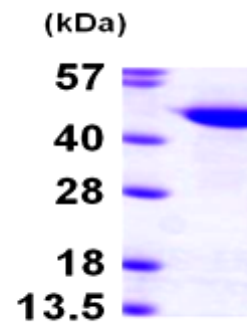
Store undiluted at 2-8°C for up to two weeks or (in aliquots) at -20°C or -70°C for longer.

Avoid repeated freezing and thawing.

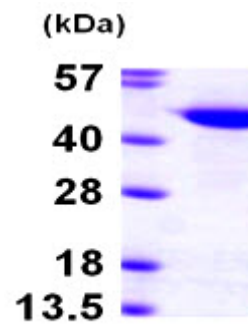
Shelf life: one year from despatch.

Pictures:

Recombinant human CUL1, 1- 410 aa, His-tagged



15% SDS-PAGE (3ug)



15% SDS-PAGE (3ug)