

AR09687PU-N**Human PSME1 (1-249, His-tag) - Purified****Alternate names:**

11S regulator complex subunit alpha, Activator of multicatalytic protease subunit 1, IFI5111, IGUP I-5111, Interferon gamma up-regulated I-5111 protein, PA28a, PA28alpha, PSME-1, Proteasome activator 28 subunit alpha, Proteasome activator complex subunit 1, REG-alpha

Quantity:

50 µg

Concentration:

0.5 mg/ml (determined by Bradford assay)

Background:

PSME1 is an interferon gamma (IFNG) inducible proteasome activator required for presentation of certain major histocompatibility (MHC) class I antigens. The PSME1 complex is an alternative proteasome activator that does not employ the use of ubiquitin. The PSME1 complex is composed of two homologous subunits, alpha and beta, which have similar catalytic properties and associate to form a hexameric ring.

Uniprot ID:[Q06323](#)**NCBI:**[NP_006254](#)**GeneID:**[5720](#)**Species:**

Human

Source:

E. coli

Format:**State:** Liquid purified protein**Purity:** >90%**Buffer System:** 20mM Tris-HCl buffer (pH8.0) containing 10% glycerol, 0.1M NaCl**Description:**

Recombinant human PSME1 protein, fused to His-tag at N-terminus, was expressed in E.coli and purified by using conventional chromatography techniques.

AA Sequence:

MGSSHHHHHH SSGLVPRGSH MAMLRVQPEA QAKVDVFRD LCTKTENLLG SYFPKKISEL
DAFLKEPALN EANLSNLKAP LDIPVDPVVK EKEKEERKKQ QEKEDKDEKK KGEDEDKGPP
CGPVNCNEKI VVLLQRLKPE IKDVIEQLNL VTTWLQLQIP RIEDGNNFGV AVQEKVFELM
TSLHTKLEGF HTQISKYFSE RGDVTKAAK QPHVGDYRQL VHELDEAEYR DIRLMVMEIR
NAYAVLYDII LKNFEKLLKP RGETKGMII

Molecular weight: 30.8 kDa (269aa) confirmed by MALDI-TOF**Storage:**

Store undiluted at 2-8°C for up to two weeks or (in aliquots) at -20°C or -70°C for longer.

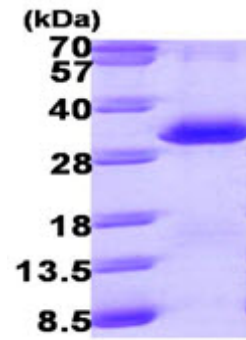
Avoid repeated freezing and thawing.

Shelf life: one year from despatch.

General Readings:

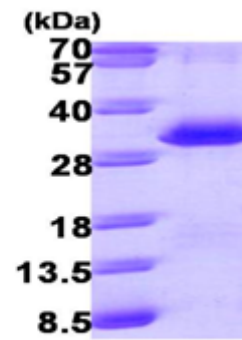
Murata S., et al. (2001) EMBO J.. 20(21):5898-907.

Pictures:



15% SDS-PAGE (3ug)

Recombinant human PSME1, 1-249 aa,
His-tagged



15% SDS-PAGE (3ug)