

AR09643PU-L**Human PTP4A2 (1-167, His-tag) - Purified****Alternate names:**

HU-PP-1, OV-1, PRL-2, PRL2, PTPCAAX2, Protein tyrosine phosphatase type IVA 2, Protein-tyrosine phosphatase 4a2, Protein-tyrosine phosphatase of regenerating liver 2

Quantity:

0.25 mg

Concentration:

0.5 mg/ml (determined by Bradford assay)

Background:

Protein tyrosine phosphatase type IVA 2 isoform 1, also known as PTP4A2, belongs to a small class of the protein tyrosine phosphatase (PTP) family. PTP4A2 is localized to the early endosome that play regulatory roles in a variety of cellular processes. This protein was found to interact with the beta-subunit of Rab geranylgeranyltransferase II (beta GGT II), and thus may function as a regulator of GGT II activity. Overexpression of this gene in mammalian cells conferred a transformed phenotype, which suggested its role in tumorigenesis.

Uniprot ID:

[Q12974](#)

NCBI:

[NP_536316](#)

GeneID:

[8073](#)

Species:

Human

Source:

E. coli

Format:

State: Liquid purified protein

Purity: >90% by SDS - PAGE

Buffer System: 20mM Tris-HCl buffer (pH 8.0) containing 1mM DTT, 10% glycerol

Description:

Recombinant human PTP4A2 protein, fused to His-tag at N-terminus, was expressed in E.coli and purified by using conventional chromatography techniques.

AA Sequence:

MRGSHHHHHH GMASMTGGQO MGRDLYDDDD KDRWGSMNRP APVEISYENM RFLITHNPTN
ATLNKFTEEL KKYGVTTLVR VCDATYDKAP VEKEGIHVLD WPFDDGAPPP NQIVDDWLNL
LKTKFREEPG CCVAVHCVAG LGRAPVLVAL ALIECGMKYE DAVQFIRQKR RGAFNSKQLL
YLEKYRPKMR LRFRTNGHC CVQ

Molecular weight: 23.2 kDa (203aa), confirmed by MALDI-TOF

Storage:

Store undiluted at 2-8°C for up to two weeks or (in aliquots) at -20°C or -70°C for longer.

Avoid repeated freezing and thawing.

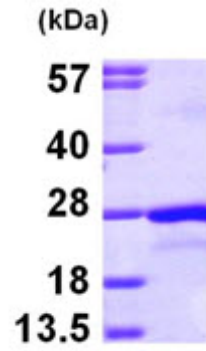
Shelf life: one year from despatch.

General Readings:

Si X., et al. (2001) J Biol chem. 246(35):32875-82.

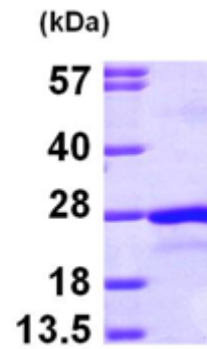
Werner SR., et al. (2003) Cancer Lett. 202(2):201-11.

Pictures:



15% SDS-PAGE (3ug)

Recombinant human PTP4A2, 1- 167 aa,
His-tagged



15% SDS-PAGE (3ug)