

AR09616PU-L**Human TXNDC4 / ERP44 (30-406, His-tag) - Purified****Alternate names:**

Endoplasmic reticulum resident protein ERp44, KIAA0573, Thioredoxin domain-containing protein 4

Quantity:

0.5 mg

Concentration:

1.0 mg/ml (determined by Bradford assay)

Background:

ERP44 is a novel endoplasmic reticulum chaperone involved in thiol-dependent retention of the early secretory pathway, forming mixed disulfides with substrate proteins through its conserved CRFS motif. The protein inhibits the calcium channel activity of ITPR1. This protein may have a role in the control of oxidative protein folding in the endoplasmic reticulum.

Uniprot ID:[Q9BS26](#)**NCBI:**[NP_055866](#)**GeneID:**[23071](#)**Species:**

Human

Source:

E. coli

Format:**State:** Liquid purified protein**Purity:** >90% by SDS - PAGE**Buffer System:** 20 mM Tris-HCl (pH 7.5) containing 10% Glycerol**Description:**

Recombinant human ERP44 protein, fused to His-tag at N-terminus, was expressed in E.coli and purified by using conventional chromatography.

AA Sequence:

MRGSHHHHHH GMASMTGGQO MGRDLYDDDD KDRWAGSMEI TSLDTENIDE ILNNADVALV
NFYADWCRFS QMLHPIFEEA SDVIKEEFPN ENQVVFARVD CDQHS DIAQR YRISKYPTLK
LFRNGMMMKR EYRQQRSVKA LADYIRQKKS DPIQEIRDLA EITTLDRSKR NIIGYFEQKD
SDNYRVFERV ANILHDDCAF LSAFGDVSKP ERYSGDNIY KPPGHSAPDM VYLGAMTNFD
VTYNWIQDKC VPLVREITFE NGEELTEEGL PFLILFHMKE DTESLEIFQN EVARQLISEK
GTINFLHADC DKFRHPLLHI QKTPADCPVI AIDSFRHMYV FGDFKDVLP GKLKQFVFDL
HSGKLHREFH HGPDPDTAP GEQAQDVASS PPESFQKLA PSEYRYTLR DRDEL

Molecular weight: kDa (415aa), confirmed by MALDI-TOF**Storage:**

Store undiluted at 2-8°C for up to two weeks or (in aliquots) at -20°C or -70°C for longer.

Avoid repeated freezing and thawing.

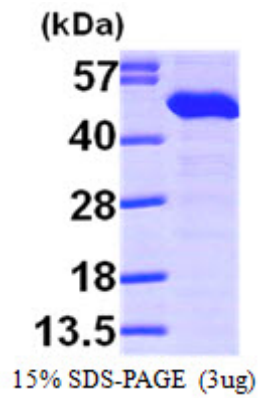
Shelf life: one year from despatch.

General Readings:

von Figura K., et al. (2008) J Biol Chem. 283(10):6375-83.

Sitia R., et al. (2002) EMBO J. 21(4):835-44.

Pictures:



Recombinant human ERP44, 30-406aa,
His-tagged

