

AR09575PU-L**Human RhoC (1-190, His-tag) - Purified****Alternate names:**

ARH9, ARHC, Rho cDNA clone 9, Rho-related GTP-binding protein RhoC

Quantity:

0.25 mg

Concentration:

0.5 mg/ml (determined by Bradford assay)

Background:

RhoC, also known as rho-related GTP-binding protein RhoC, is a small signaling G protein (more specifically a GTPase), and is a member of the Rac subfamily of the family Rho family of GTPases. It cycles between inactive GDP-bound and active GTP-bound states and function as molecular switches in signal transduction cascades. RhoC promotes reorganization of the actin cytoskeleton and regulate cell shape, attachment, and motility.

Uniprot ID:[P08134](#)**NCBI:**[NP_001036143](#)**GeneID:**[389](#)**Species:**

Human

Source:

E. coli

Format:**State:** Liquid purified protein**Purity:** >90% by SDS - PAGE**Buffer System:** 20 mM Tris-HCl buffer (pH 8.0) containing 20% glycerol, 0.1 M NaCl, 1 mM DTT**Description:**

Recombinant human RhoC protein, fused to His-tag at N-terminus, was expressed in E.coli and purified by using conventional chromatography techniques.

AA Sequence:

MGSSHHHHHH SSGLVPRGSH MAAIRKKLVI VGDGACGKTC LLIVFSKDQF PEVYVPTVFE
NYIADIEVDG KQVELALWDT AGQEDYDRLR PLSYPD TDVI LMCFSIDSPD SLENIPEKWT
PEVKHFPCNV PIILVGNKGD LRQDEHTRRE LAKMKQEPVR SEEGRDMANR ISAFGYLECS
AKTKEGVREV FEMATRAGLQ VRKNKRRRGC

Molecular weight: 23.8 kDa (210aa) confirmed by MALDI-TOF (Real molecular weight on SDS-PAGE will be shift up)**Storage:**

Store undiluted at 2-8°C for up to two weeks or (in aliquots) at -20°C or -70°C for longer.

Avoid repeated freezing and thawing.

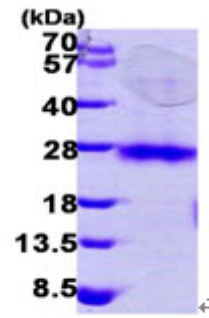
Shelf life: one year from despatch.

General Readings:

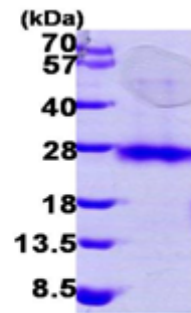
Ridley AJ.. (2006) Trends Cell Biol. 16(10):522-9.

Pictures:

Recombinant human RhoC, 1-190 aa,
His-tagged



15% SDS-PAGE (3ug)



15% SDS-PAGE (3ug)