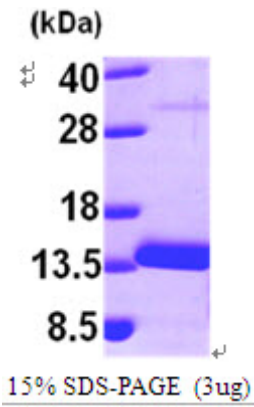


AR09558PU-L**Human MTPN (1-118, His-tag) - Purified**

Alternate names:	GCDDP, V-1, myotrophin
Quantity:	0.5 mg
Concentration:	1.0 mg/ml (determined by Bradford assay)
Background:	MTPN (myotrophin), an ankyrin repeat protein, stimulates protein synthesis and cardiomyocyte growth to initiate cardiac hypertrophy by activating the NF-kappaB signaling cascade. This protein plays a potential role in cerebellar morphogenesis and may function in differentiation of cerebellar neurons, particularly of granule cells. Elevated levels of MTPN are expressed in human dilated cardiomyopathic and ischemic hearts.
Uniprot ID:	P58546
NCBI:	NP_665807
GeneID:	136319
Species:	Human
Source:	E. coli
Format:	State: Liquid purified protein Purity: >90% by SDS - PAGE Buffer System: 20 mM Tris-HCl Buffer (pH 8.0) containing 10% Glycerol
Description:	Recombinant human MTPN, fused to His-tag at N-terminus, was expressed in E.coli and purified by using conventional chromatography. AA Sequence: <u>MGSSHHHHHH</u> <u>SSGLVPRGSH</u> MCDKEFMWAL KNGDLDEVKD YVAKGEDVNR TLEGGGRKPLH YAADCGQLEI LEFLLLKGAD INAPDKHHIT PLLSAVYEGH VSCVKLLLSK GADKTVKGPDGLTAFEATDN QAIKALLQ Molecular weight: kDa (138aa), confirmed by MALDI-TOF
Storage:	Store undiluted at 2-8°C for up to two weeks or (in aliquots) at -20°C or -70°C for longer. Avoid repeated freezing and thawing. Shelf life: one year from despatch.
General Readings:	Sen S., et al. (2008) J Biol Chem. 283(41):27947-56. Sivasubramanian N., et al (2002) J Biol Chem. 277(26):23888-97.

Pictures:



Recombinant human MTPN, 1-118aa, His-tagged

