

AR09313PU-L**Human SKP1 / OCP2 (1-160) - Purified****Alternate names:**

Cyclin A/CDK2-associated protein p19, EMC19, OCP-2, OCP-II, Organ of Corti protein 2, RNA polymerase II elongation factor-like protein, S-phase kinase-associated protein 1, SKP1A, TCEB1L, Transcription elongation factor B, p19A, p19skp1

Quantity:

0.5 mg

Concentration:

1.0 mg/ml (determined by Bradford assay)

Background:

S-phase kinase-associated protein 1, also known as SKP1, is an F-box protein which functions as a substrate recognition component of the SCF ubiquitin ligase complex. It binds to proteins containing an F-box motif, such as cyclin F, S-phase kinase-associated protein 2, and other regulatory proteins involved in ubiquitin dependent proteolysis. It is also involved in the control of beta-catenin levels and the activity of beta-catenin dependent TCF transcription factors.

Uniprot ID:[P63208](#)**NCBI:**[NP_008861](#)**GeneID:**[6500](#)**Species:**

Human

Source:

E. coli

Format:**State:** Liquid purified protein**Purity:** >90% by SDS - PAGE**Buffer System:** 20 mM Tris-HCl buffer (pH 8.0) containing 50 mM NaCl, 10% glycerol**Description:**

Recombinant human SKP1 protein was expressed in E.coli and purified by using conventional chromatography techniques.

AA Sequence:

MPSIKLQSSD GEIFEVDVEI AKQSVTIKTM LEDLGMDDG DDDPVLPLNV NAAILKKVIQ
WCTHHKDDPP PPEDDENKEK RTDDIPVWDQ EFLKVDQGTL FELILAANYL DIKGLLDVTC
KTVANMIK GK TPEEIRKTFN IKNDFTEEEE AQVGSTQFCL

Molecular weight: kDa (160 aa)**Storage:**

Store undiluted at 2-8°C for up to two weeks or (in aliquots) at -20°C or -70°C for longer.

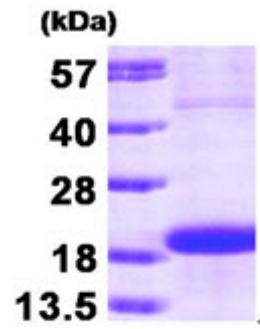
Avoid repeated freezing and thawing.

Shelf life: one year from despatch.

General Readings:

Min KW., et al. (2003) J Biol Chem. 278(18):15905-10.

Pictures:



15% SDS-PAGE (3ug)

Recombinant human SKP1, 1-160 aa: 15%
SDS-PAGE (3 µg)

