

**AR09160PU-L****Recombinant human LXN (aa 1-222)****Alternate names:**

ECI, Endogenous carboxypeptidase inhibitor, LXN, Latexin, MUM, TCI, Tissue carboxypeptidase inhibitor

**Quantity:**

0.5 mg

**Concentration:**

1 mg/ml (determined by Bradford assay)

**Background:**

Latexin, a carboxypeptidase A inhibitor, is highly expressed in heart, prostate, ovary, kidney, pancreas, and colon, moderately or low in other tissues including brain. Latexin has no detectable sequence similarity with plant and parasite inhibitors, but it is related to a human putative tumor suppressor protein, TIG1. It is down-regulated in the presenilin-1-deficient mouse brain, thus putatively playing a role in Alzheimer's disease.

**Uniprot ID:**[Q9BS40](#)**NCBI:**[NP\\_064554](#)**GeneID:**[56925](#)**Species:**

Human

**Source:**

E. coli

**Format:****State:** Liquid purified protein**Purity:** >95% by SDS - PAGE**Buffer System:** In 20 mM Tris-HCl buffer (pH 7.5) containing 50 mM NaCl, 10% glycerol**Endotoxin Level:** < 1.0 EU per 1 µg of protein (determined by LAL method)**Description:**

Recombinant human Latexin protein was expressed in E.coli and purified by using conventional chromatography.

**AA Sequence:**

MEIPPTNYPA SRAALVAQNY INYQQGTPHR VFEVQKVKQA SMEDIPGRGH KYRLKFAVEE  
IIQKQVKVNC TAEVLYPSTG QETAPEVNFT FEGETGKNPD EEDNTFYQRL KSMKEPLEAQ  
NIPDNFGNVS PEMTLVLHLA WVACGYIIWQ NSTEDTWTYKM VKIQTVKQVQ RNDDFIELDY  
TILLHNIASQ EIIPWQMQL WHPQYGTKVK HNSRLPKEVQ LE

**Molecular weight:** 25.7 kDa (222 aa)**Storage:**

Store undiluted at 2-8°C for up to two weeks or (in aliquots) at -20°C or -70°C for longer.

Avoid repeated freezing and thawing.

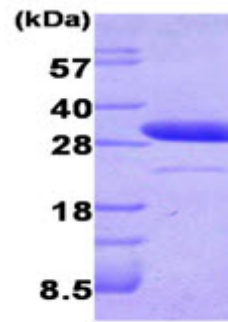
Shelf life: one year from despatch.

**General Readings:**

De Haan G., et al. (2007). Nat Genet. 39(2):141-2.

Aagaard A., et al. (2005). Structure. 13(2):309-17.

Pictures:



15% SDS-PAGE (3 $\mu$ g)

Recombinant human LXN, 1-222 aa: 15%  
SDS-PAGE (3  $\mu$ g)

