

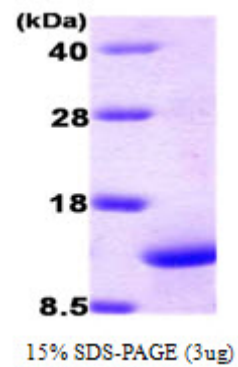
**AR09050PU-L****Recombinant human Interleukin-15 (IL-15) (aa 49-162), His-tagged**

<b>Alternate names:</b>	IL-15
<b>Quantity:</b>	0.5 mg
<b>Concentration:</b>	1.0 mg/ml
<b>Background:</b>	Interleukin (IL-15) is a pleiotropic cytokine that plays a pivotal role in both innate and adaptive immunity. IL-15 is unique among cytokines due to its participation in a trans signaling mechanism in which IL-15 receptor alpha (IL-15R alpha) from one subset of cells presents IL-15 to neighboring IL-2R beta/gamma(c)-expressing cells. This newly discovered cytokine is produced by a wide variety of cells and tissues and like IL-2, stimulates the proliferation of T-lymphocytes and induces the generation of cytotoxic T-lymphocytes (CTLs) and lymphokine-activated killer (LAK) cells.
<b>Uniprot ID:</b>	<a href="#">P40933</a>
<b>NCBI:</b>	<a href="#">NP_000576.1</a>
<b>GeneID:</b>	<a href="#">3600</a>
<b>Species:</b>	Human
<b>Source:</b>	E. coli
<b>Format:</b>	<b>State:</b> Liquid purified protein <b>Purity:</b> >95% by SDS PAGE <b>Buffer System:</b> PBS, pH 7.4, 0.2 mM PMSF, 10% glycerol <b>Endotoxin Level:</b> < 1.0 EU per 1 µg of protein (determined by LAL method)
<b>Description:</b>	Recombinant human IL-15, fused to His-tag, was expressed in E.coli and purified by using conventional chromatography after refolding of the isolated inclusion bodies in a redox buffer. <b>AA Sequence:</b> MNWVNVISDL KKIEDLIQSM HIDATLYTES DVHPSCKVTA MKCFLELQV ISLES GDASI HDTVENLIIL ANNSLSSNGN VTESGCKECE ELEEKNIKEF LQSFVHIVQM FINTSLEHHH HHH <b>Biological Activity:</b> Measured in a cell proliferation assay using CTLL2 mouse cytotoxic T cells. The ED50 for this effect is < 2.5 ng/ml. <b>Activity Assay</b> 1. Cell line: CTLL2 (mouse cytotoxic T cell) 2. Maintenance Condition: 10% FBS RPMI 1640 with hIL2 3. Assay Medium: 10% FBS RPMI 1640 without hIL2 4. Cell Density: 2 x 10 <sup>4</sup> cells/well (96 well plate, final volume 100ul) 5. Starvation : 24hr, Assay medium 6. Incubation Time: 24hr (after sample treatment) 7. Concentration Range: 0.039 ng/ml - 40 ng/ml 8. Detection Method : MTT assay <b>Molecular weight:</b> 13.9 kDa (123 aa), confirmed by MALDI-TOF

**Storage:** Store (in aliquots) at -20°C. Avoid repeated freezing and thawing.  
Shelf life: one year from despatch.

**General Readings:** Lorenzen I., et al., (2006). J Biol Chem. Mar 10; 281 (10):6642-7.

**Pictures:**



Interleukin 15: 15% SDS-PAGE (3  $\mu$ g)

