

AR03009PU-L**E. coli Maltose Binding Protein Tag / MBP-Tag (27-392) - Purified****Alternate names:**

MMBP, Maltodextrin-binding protein, malE-Tag

Quantity:

1 mg

Concentration:

1.0 mg/ml

Background:

MBP (Maltose Binding Protein) is a protein related with the maltose/maltodextrin system of Escherichia coli, which is responsible for the uptake and efficient catabolism of maltodextrins. It is a complex regulatory and transport system involving many proteins and protein complexes. MBP has been used to increase the yield of its fusion partner in many cases. In addition, MBP is often able to promote the solubility of polypeptides to which it is fused.

Uniprot ID:[P0AEX9](#)**NCBI:**[AP_004535.1](#)**GeneID:**[948538](#)**Species:**

E. coli

Source:

E. coli

Format:**State:** Liquid purified peptide**Purity:** >95% by SDS PAGE**Buffer System:** 20 mM Tris-HCl buffer (pH 8.0)**Description:**

Recombinant MBP was expressed in E.coli and purified by conventional chromatography techniques.

AA Sequence:

MKIEEGKLVI WINGDKGYNG LAEVGKKFEK DTGIKVTVEH PDKLEEKFPQ VAATGDGPDI
IFWAHDRFGG YAQSGLLAEI TPKAFQDKL YPFTWDAVRY NGKLIAYPIA VEALSLIYNK
DLLPNPPKTW EEIPALDKEL KAKGKSALMF NLQEPYFTWP LIAADGGYAF KYENGYDIK
DVGVDNAGAK AGLTFLVDLI KKNHMNADTD YSIAEAAFNK GETAMTINGP WAWSNIDTSK
VNYGVTVLPT FKGQPSKPFV GVLSAGINAA SPNKELAKEF LENYLLTDEG LEAVNKDKPL
GAVALKSYEE ELAKDPRIAA TMENAQKGEI MPNIPQMSAF WYAVRTAVIN AASGRQTVDE
ALKDAQTNSS SNNNNNNNNN NLGIEGR

Molecular weight: 42 kDa (387aa)**Storage:**

Store undiluted at 2-8°C for up to two weeks or (in aliquots) at -20°C or -70°C for longer.

Avoid repeated freezing and thawing.

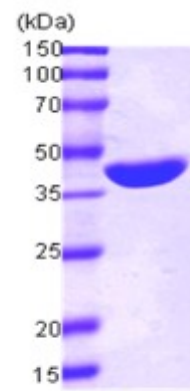
Shelf life: one year from despatch.

General Readings:

1. Fox JD., et al. (2001). Protein Sci. 10(3): 622-30.

2. Riggs., et al. (2000). Mol. Biotechnol. 15: 51-63.

Pictures:



15% SDS-PAGE(3 μ g)