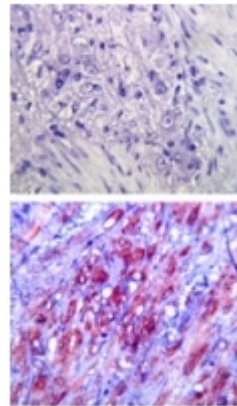


TLR4 8x Sampler Kit

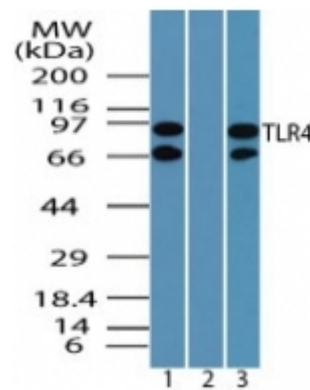
Alternate names:	Toll-like receptor 4
Catalog No.:	APM0008PU-N
Quantity:	8 x 25 µg
Background:	<p>TLR4 is a member of the Toll-like receptor (TLR) family of transmembrane proteins comprised of multiple copies of leucine rich repeats in the extracellular domain and a TIR domain. It is a widely studied, phylogenetically conserved, member playing a fundamental role in pathogen recognition and activation of innate immunity. Like its counterpart in Drosophila, TLR4 signals through adaptor molecules and mediates the production of cytokines necessary for the development of effective immunity. TLR4 belongs to the multi-protein complex of lipopolysaccharide (LPS) receptor, containing CD14, LY96 and TLR4, and is involved in signal transduction events induced by lipopolysaccharide (LPS) found in most gram-negative bacteria.</p>
Format:	State: Liquid purified Ig fraction.
Applications:	<p>Western blot analysis. Flow Cytometry. Neutralization. Confocal Microscopy. Immunoprecipitation. Immunohistochemistry. Immunofluorescence/Immunocytochemistry.</p> <p>Other applications not tested. Optimal dilutions are dependent on conditions and should be determined by the user.</p>
Specificity:	<p>Species: Human, Mouse, Rat, Canine, Primates. Other species not tested.</p>
Add. Information:	<p>TLR Antibody Screening Set contains 8 Polyclonal or Monoclonal Antibodies (25 µg Purified): SM1677P-25: TLR4 Antibody. SM1827P-25: TLR4 Antibody. SP7195P-25: TLR4 Antibody. SP7196P-25: TLR4 Antibody. SM7124P-25: TLR4 Antibody. AP22290PU-25: TLR4 Antibody. AP22292PU-25: TLR4 Antibody. AP22291PU-25: TLR4 Antibody.</p>

Pictures:

Immunohistochemical analysis of TLR4 in Paraffin-Embedded Formalin-fixed human colon tissue using an isotype control (top) and SM7124P(bottom) at 5 µg/ml.



Western blot analysis of TLR4 in Daudi cell lysate in the 1) absence and 2) presence of immunizing peptide and 3) Ramos cell lysate AP22290PU-N at 1.0 µg/ml. HRP Goat anti-Rabbit Ig secondary antibody and PicoTect ECL substrate solution were used for this test.



Cell surface flow cytometric analysis of TLR4 in stable HEK293/hTLR4 cells using SM1677PT at 1 µg/10e6 cells. Secondary antibody PE Goat anti-Mouse IgG at 0.25 µg/10e6 cells. Both stable HEK293/hTLR4 and EK293/Vector cell lines were equally stained.

