

## TLR3 5 x Sampler Kit

**Alternate names:** Toll-like receptor 3

**Catalog No.:** APM0007PU-N

**Quantity:** 5 x 25 µg

**Background:** The Toll-like receptor (TLR) family in mammals comprises a family of transmembrane proteins characterized by multiple copies of leucine rich repeats in the extracellular domain and IL-1 receptor motif in the cytoplasmic domain. Like its counterparts in *Drosophila*, TLRs signal through adaptor molecules. The TLR family is a phylogenetically conserved mediator of innate immunity that is essential for microbial recognition. Ten human homologs of TLRs (TLR1-10) have been described.

**Format:** **State:** Liquid purified Ig fraction

**Applications:** **Western blot analysis.**

**Flow Cytometry.**

**Immunoprecipitation.**

**Immunohistochemistry.**

**Immunofluorescence/Immunocytochemistry.**

*Please See individual data sheets for details of antibody use.*

Other applications not tested. Optimal dilutions are dependent on conditions and should be determined by the user.

**Specificity:** **Species:** Human, Mouse, Rat, Canine.

Other species not tested.

**Add. Information:** TLR Antibody Screening Set contains 5 TLR3 Antibodies:

SM7101P-25: TLR3 antibody (25 µg Purified).

SP7128P-25: TLR3 antibody (25 µg Purified).

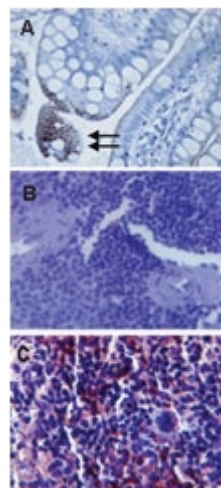
AP22287PU-25: TLR3 antibody (25 µg Purified).

AP22288PU-25: TLR3 antibody (25 µg Purified).

AM32786PU-25: TLR3 antibody (25 µg Purified).

**Pictures:**

Immunohistochemistry analysis of TLR3 in (A) Human gut lumen (longitudinal section, transverse region) using AP22288PU-N at 10 µg/ml (Data courtesy Dr. Elizabeth Furrie, University of Dundee) and mouse spleen tissue using isotype control (B) and AP22288PU-N (C) at 5 µg/ml.



Western blot analysis of TLR3 in Daudi cell lysate in the 1) absence and 2) presence of immunizing peptide and 3) 3T3 cell lysate using AP22288PU-N at 2 µg/ml. HRP Goat anti-Rabbit Ig HRP secondary antibody and PicoTect ECL substrate solution were used for this test.

