

TLR2 7x Sampler Kit

Alternate names: Toll-like receptor 2

Catalog No.: APM0006PU-N

Quantity: 5x25µg + 1x50µl kit

Background: The Toll-like receptor (TLR) family in mammals comprises a family of transmembrane proteins characterized by multiple copies of leucine rich repeats in the extracellular domain and IL-1 receptor motif in the cytoplasmic domain. Like its counterparts in *Drosophila*, TLRs signal through adaptor molecules. The TLR family is a phylogenetically conserved mediator of innate immunity that is essential for microbial recognition. Ten human homologs of TLRs (TLR1-10) have been described. TLR2 is differentially expressed in human cells. TLR2 is expressed in tonsils, lymph nodes, and appendices, activated B-cells in germinal centers. CD14+ monocytes expressed the highest level of TLR2 followed by CD15+ granulocytes, and CD19+ B-cells, CD3+ T-cells, and CD56+ NK cells did not express TLR2.

Format: State: Liquid Purified or Ascites

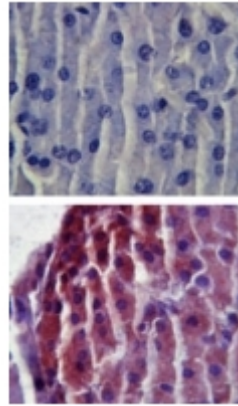
Applications: **ELISA.**
Western blot analysis.
Neutralization.
Flow Cytometry.
Immunoprecipitation.
Immunohistochemistry.
Immunofluorescence/Immunocytochemistry.
Other applications not tested. Optimal dilutions are dependent on conditions and should be determined by the user.

Specificity: **Species:** Human, Mouse, Rat, Canine, Chimpanzee.
Other species not tested.

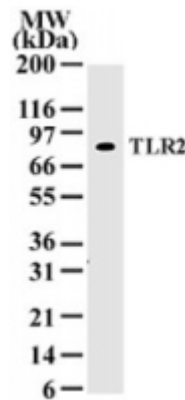
Add. Information: TLR2 Antibody Screening Set contains 7 Polyclonal or Monoclonal Antibodies:
SM7100P-50: TLR2 Antibody (50 µl Ascites).
SP7193P-25: TLR2 Antibody (25 µg Purified).
SM1825P-25: TLR2 Antibody (25 µg Purified).
SP7126P-25: TLR2 Antibody (25 µg Purified).
SP7127P-25: TLR2 Antibody (25 µg Purified).
SP7194P-25: TLR2 Antibody (25 µg Purified).
AM20374PU-25: TLR2 Antibody (25 µg Purified).

Pictures:

Immunohistochemical analysis of TLR2 in Paraffin-Embedded Formalin-Fixed Mouse pancreas tissue using an isotype control (top) and SP7193P (bottom) at 5 µg/ml.



Western blot analysis of TLR2 in 30 µg of Ramos whole cell lysate using SM7100P at 1/500. HRP Goat anti-Mouse Ig antibody and PicoTect ECL substrate solution were used for this test.



Cell surface flow cytometric analysis of TLR2 in human PBMCs (monocyte-gate) using 2 µg of SM1825PS. Shaded histogram represents cells without antibody; dotted represents isotype control, red represents TLR2 antibody. TLR cell surface Flow kit (10099K) and a PE conjugated anti-Mouse IgG secondary were used for this test.

