

## TLR 10x Sampler Kit

**Catalog No.:** APM0004PU-N

**Quantity:** 1 kit

**Background:** The Toll-like receptor (TLR) family in mammals comprises a family of transmembrane proteins characterized by multiple copies of leucine rich repeats in the extracellular domain and IL-1 receptor motif in the cytoplasmic domain. Like its counterparts in *Drosophila*, TLRs signal through adaptor molecules. The TLR family is a phylogenetically conserved mediator of innate immunity that is essential for microbial recognition. Ten human homologs of TLRs (TLR1-10) have been described.

**Format:** **State:** Liquid purified Ig fraction  
**Purification:** Protein G Chromatography

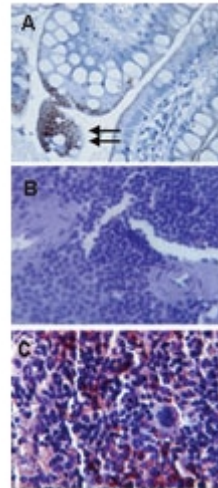
**Applications:** **Western blot analysis.**  
**Flow Cytometry.**  
**Neutralization.**  
**Confocal Microscopy.**  
**Immunoprecipitation.**  
**Immunohistochemistry.**  
**Immunofluorescence/Immunocytochemistry.**  
Other applications not tested. Optimal dilutions are dependent on conditions and should be determined by the user.

**Specificity:** **Species:** Human, Mouse, Rat, Canine, Rhesus Monkey.  
Other species not tested.

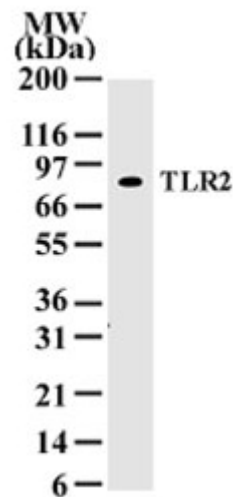
**Add. Information:** TLR Antibody Screening Set contains 10 Polyclonal or Monoclonal Antibodies:  
SP7341P-25: TLR1 Antibody  
SM1825P-25: TLR2 Antibody  
SM7100P-50: TLR2 Antibody  
SP7193P-25: TLR2 Antibody  
SM7101P-25: TLR3 Antibody  
SM1677P-25: TLR4 Antibody  
SP7197P-25: TLR5 Antibody  
SP7198P-25: TLR7 Antibody  
SM7104P-25: TLR8 Antibody  
SM7105P-25: TLR9 Antibody

## Pictures:

Immunohistochemistry analysis of TLR3 in (A) Human gut lumen (longitudinal section, transverse region) using SM7101P at 10 µg/ml (Data courtesy Dr. Elizabeth Furrie, University of Dundee) and mouse spleen tissue using Isotype Control (B) and SM7101P (C) at 5 µg/ml.



Western blot analysis of TLR2 in 30 µgs of Ramos whole cell lysate using SM7100P at 1/500.



Intracellular Flow Cytometry of TLR9 in Ramos cells using 0.1 µg of SM7105P. Shaded histogram represents Ramos cells without antibody, green represents Isotype Control (Mouse IgG1), red represents anti-TLR9 antibody.

