



OriGene Technologies Inc.

9620 Medical Center Drive, Ste 200
Rockville, MD 20850
UNITED STATES
Phone: +1-858-888-7900
Fax: +1-858-888-7904
US-info@acris-antibodies.com

APM0003PU-N

OriGene EU

Acris Antibodies GmbH
Schillerstr. 5
32052 Herford
GERMANY
Phone: +49-5221-34606-0
Fax: +49-5221-34606-11
info@acris-antibodies.com

TLR (Cell Surface) 6x Sampler Kit

Catalog No.: APM0003PU-N

Quantity: 6 x 25 µg

Background: The Toll-like receptor (TLR) family in mammals comprises a family of transmembrane proteins characterized by multiple copies of leucine rich repeats in the extracellular domain and IL-1 receptor motif in the cytoplasmic domain. Like its counterparts in *Drosophila*, TLRs signal through adaptor molecules. The TLR family is a phylogenetically conserved mediator of innate immunity that is essential for microbial recognition. TLR3, 7, 8, and 9 are expressed in the intracellular organelles. TLR7 and TLR8 have a common ligand, viral single-stranded RNA. TLR3 is activated by viral double-stranded RNA. TLR9 responds to bacterial unmethylated CpG DNA. Ten human homologs of TLRs (TLR1-10) have been described.

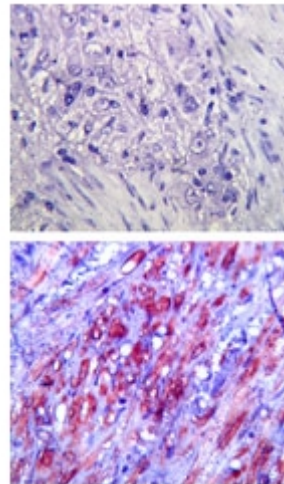
Format: **State:** Liquid purified Ig fraction
Purification: Protein G Chromatography

Applications: **Western blot analysis.**
Flow Cytometry.
Immunoprecipitation.
Immunofluorescence/Immunocytochemistry.
Immunohistochemistry on Paraffin Sections.
Other applications not tested. Optimal dilutions are dependent on conditions and should be determined by the user.

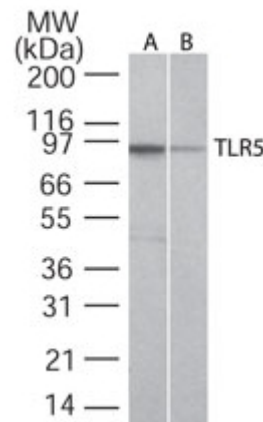
Add. Information: TLR (Cell Surface) Screening Set contains 4 Polyclonal or Monoclonal Antibodies:
SP7341P-25: TLR1 Antibody
SM1825-25: TLR2 Antibody
SM7124P-25: TLR4 Antibody
SM7103P-25: TLR5 Antibody
SM7112P-25: TLR6 Antibody
AM20372PU-25: TLR10 Antibody

Pictures:

Immunohistochemical staining of TLR4 in Paraffin-Embedded Formalin-Fixed Human Colon tissue using an isotype control (Top) and SM7124P (Bottom) at 5 µg/ml.



Western blot analysis of TLR5 in A) Ramos and B) Raw cell lysate using SM7103P at 2 µg/ml.



Cell Surface Flow Cytometry of TLR1 in Human PBMCs (monocyte gate) using SP7341P at 0.5 µg/10e6 cells. Shaded histogram represents cells without TLR1 antibody, Green represents isotype control, Red represents TLR1 antibody. PE conjugated Goat anti-Rabbit secondary antibody was used.

