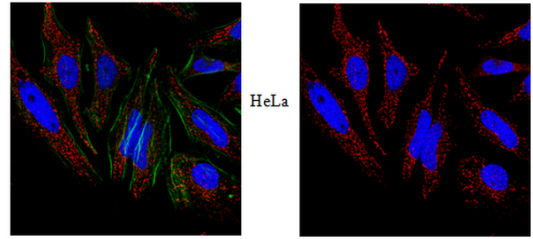


Polyclonal Antibody to Lamellipodin - Aff - Purified

Alternate names:	Amyotrophic lateral sclerosis 2 chromosomal region candidate gene 18 protein, Amyotrophic lateral sclerosis 2 chromosomal region candidate gene 9 protein, Lamellipodin, PREL-2, Proline-rich EVH1 ligand 2, Protein RMO1, RAPH1, Ras-associated and pleckstrin homology domains-containing protein 1
Catalog No.:	AP56090PU-N
Quantity:	0.1 mg
Concentration:	lot-specific
Background:	Ras-associated and pleckstrin homology domains-containing protein 1 (RAPH1), also commonly known as Lamellipodin, is a member of the MRL family and plays an important role in interacting with Ena/VASP proteins at the tips of filopodia and protruding lamellipodia. There are nine isoforms for Lamellipodin (RMO1, RMO1a, RMO1b, RMO1c, RMO1ab, RMO1ac, RMO1bc, RMO1abc and RMO1-RAPH1). RMO1-RAPH1 is ubiquitously expressed in a wide variety of tissues, with highest amounts in brain, heart, ovary and developing embryo.
Uniprot ID:	Q70E73
NCBI:	NP_976241.1
GeneID:	65059
Host:	Rabbit
Immunogen:	GST-tagged recombinant protein corresponding to the pleckstrin homology domain of human Lamellipodin.
Format:	State: Liquid purified Ig fraction Purification: Affinity Chromatography Buffer System: 0.1 M Tris-Glycine (pH 7.4), 150 mM NaCl with 0.05% sodium azide.
Applications:	Immunocytochemistry. Western Blot: 0.2 µg/mL of this antibody detected Lamellipodin in 10 µg of rat E16 brain tissue lysate.. Other applications not tested. Optimal dilutions are dependent on conditions and should be determined by the user.
Specificity:	This antibody recognizes the pleckstrin homology domain of Lamellipodin Demonstrated to react with Human, Mouse, and Rat.
Storage:	Store undiluted at 2-8°C. Shelf life: one year from despatch.

Pictures:

Immunocytochemistry Analysis:
Representative lot data.
Confocal fluorescent analysis of HeLa cells using Cat.AP56090PU-N Anti-Lamellipodin and a Donkey Anti-Rabbit secondary antibody conjugated to Cy3 (Red). Actin filaments have been labeled with Alexa Fluor® 488 (Green). Nucleus is stained with DAPI (Blue). This antibody positively stains the cytoskeleton



Western Blotting Analysis:
Representative lot data.
Rat E16 brain tissue lysate was probed with Cat. No. AP56090PU-N, Anti-Lamellipodin (0.2 µg/mL). Proteins were visualized using a Donkey Anti-Rabbit IgG secondary antibody conjugated to HRP and a chemiluminescence detection system. Arrow indicates Lamellipodin (~135 kDa). Note: An uncharacterized band may appear at ~12 kDa in some lysates. The second arrow indicates one of the 8 other isoforms that are all approximately ~70 kDa

