

## Polyclonal Antibody to Megf10 (Cytoplasm. Dom) - Aff - Purified

<b>Alternate names:</b>	Multiple EGF-like domains protein 10, Multiple epidermal growth factor-like domains protein 10
<b>Catalog No.:</b>	AP55964PU-N
<b>Quantity:</b>	0.1 mg
<b>Concentration:</b>	lot-specific
<b>Background:</b>	Multiple epidermal growth factor-like domains protein 10 (Megf10) is a type 1 transmembrane protein with multiple EGF-like extracellular domains. Megf10 is highly expressed in the brain, and plays an important role in phagocytosis of apoptotic cells. This role may be performed through the interaction of Megf10 with the ATP-binding cassette transporter (ABCA1) protein. Previous studies have suggested that Megf10 may be involved in the uptake of amyloid $\beta$ peptides in the brain. Megf10 may therefore play a role Alzheimer's disease.
<b>Uniprot ID:</b>	<a href="#">Q6DIB5</a>
<b>NCBI:</b>	<a href="#">NP_001001979.1</a>
<b>GeneID:</b>	<a href="#">70417</a>
<b>Host:</b>	Rabbit
<b>Immunogen:</b>	Histidine-tagged recombinant protein corresponding to the cytoplasmic domain of mouse Megf10.
<b>Format:</b>	<b>State:</b> Liquid purified Ig fraction <b>Purification:</b> Affinity Chromatography <b>Buffer System:</b> 0.1 M Tris-Glycine (pH 7.4), 150 mM NaCl with 0.05% sodium azide.
<b>Applications:</b>	<b>Immunofluorescence:</b> A representative lot was used by an independent laboratory in P7 caudal brain tissue and retina cells. Image courtesy from the laboratory of Dr. Joshua Sanes, Harvard University. <b>Western Blot:</b> 1 $\mu$ g/mL of this antibody detected Megf10 on 10 $\mu$ g of mouse retina tissue lysate. Other applications not tested. Optimal dilutions are dependent on conditions and should be determined by the user.
<b>Specificity:</b>	This antibody recognizes Megf10 at the cytoplasmic domain. Demonstrated to react with Mouse. Other homologies: Rat (98% sequence homology) and Human (92% sequence homology).
<b>Storage:</b>	Store undiluted at 2-8°C. Shelf life: one year from despatch.

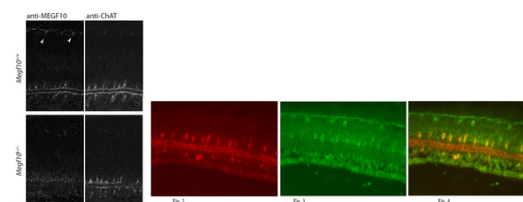
## Pictures:

### Immunofluorescence Analysis:

Representative lot data.

P7 caudal brain tissue (Fig. 1) and mouse retina cells fixed in 4% PFA/PBS (Fig. 2 - 4) were prepared using heat-induced epitope retrieval (HIER). Immunostaining was performed using a 1:1,000 dilution of Cat. No. AP55964PU-N, Anti-Megf10.

Positive staining was observed in Megf10 wildtype (+/+) P7 caudal brain tissue but not in Megf10 mutants (-/-). Positive staining was also observed in mouse retina cells. Image courtesy from the laboratory of Dr. Joshua Sanes, Harvard University.



### Western Blotting Analysis:

Representative lot data.

Mouse retina tissue lysate was probed with Anti-Megf10 (1.0 µg/mL).

Proteins were visualized using a Donkey Anti-Rabbit IgG secondary antibody conjugated to HRP and a chemiluminescence detection system. Arrow indicates Megf10 (~130 kDa).

