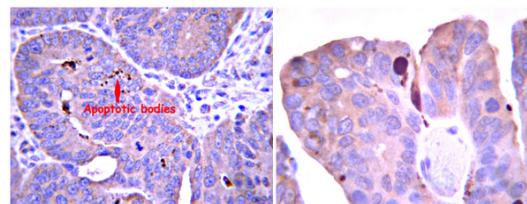


Polyclonal Antibody to Caspase 6 (C-term) - Aff - Purified

Alternate names:	Apoptotic protease Mch-2, apoptosis-related cysteine peptidase, apoptosis-related cysteine protease, caspase 6
Catalog No.:	AP55950PU-N
Quantity:	0.1 mg
Concentration:	lot-specific
Background:	Caspases are a family of cytosolic aspartate-specific cysteine proteases involved in the initiation and execution of apoptosis. Caspase 6 is a major apoptotic executioner (1,2). It exists as a pro-domain protein and is cleaved by caspase-3 into two subunits, an 18 kDa and a 10 kDa subunit that dimerize to form the active enzyme (3). Caspase 6 cleaves among many different intracellular proteins, nuclear lamins. Lamins play a significant role in maintaining the integrity of the cell membrane, and their cleavage results in subsequent cellular breakdown and death (4).
Uniprot ID:	Q6AZ23
NCBI:	NP_113963.2
GeneID:	103689977
Host:	Rabbit
Immunogen:	KLH-conjugated linear peptide corresponding to the C-terminus of the large subunit of rat Caspase 6.
Format:	State: Liquid purified Ig fraction Purification: Affinity Chromatography Buffer System: 0.1 M Tris-Glycine (pH 7.4, 150 mM NaCl) with 0.05% sodium azide.
Applications:	Immunohistochemistry: 1:600 dilution from a previous lot detected Caspase 6 in colorectal carcinoma tissue. Western Blot: 0.5 µg/mL of this antibody detected Caspase 6 in 10 µg of rat kidney tissue lysate.. Other applications not tested. Optimal dilutions are dependent on conditions and should be determined by the user.
Specificity:	The antibody recognizes the large subunit of active Caspase 6. Demonstrated to react with Human and Rat. Predicted to react with Bovine, Feline, and Chimpanzee based on 100% sequence homology.
Storage:	Store undiluted at 2-8°C. Shelf life: One year from despatch.

Pictures:

Immunohistochemistry Analysis:
Representative lot data.
Paraffin-embedded colorectal carcinoma tissue was prepared using heat-induced epitope retrieval in citrate buffer, pH 6.0. Immunostaining was performed using a 1:600 dilution of Cat. No. AP55950PU-N, Anti-Caspase 6 (active form). Reactivity was detected using the IHC-Select Detection Kit. Staining pattern appears to be restricted to cells under going apoptosis.



Western Blotting Analysis:
Representative lot data.
Rat kidney tissue lysate was probed with Anti-Caspase 6, large subunit (0.5 µg/mL). Proteins were visualized using a Donkey Anti-Rabbit IgG secondary antibody conjugated to HRP and detected using a chemiluminescence detection system. Arrow indicates Caspase 6, large subunit (~18 kDa).

