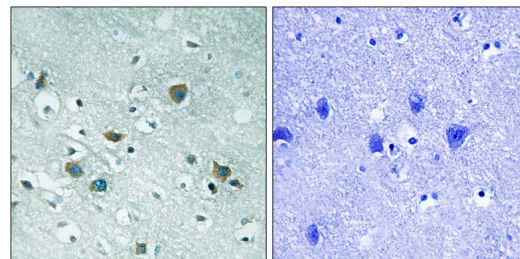


AP55813PU-S**Polyclonal Antibody to DPYSL2 / CRMP2 pThr509 - Aff - Purified**

| | |
|----------------------------|--|
| Alternate names: | Collapsin response mediator protein 2, DRP-2, Dihydropyrimidinase-related protein 2, N2A3 |
| Quantity: | 50 µg |
| Concentration: | 1.0 mg/ml |
| Background: | CRMP-2 is an enzyme with dihydropyrimidinase activity. Plays a role in RhoA-dependent signaling, through interaction with and regulation of Rho kinase. Plays a role in neurogenesis. Aberrantly expressed in fetal Down syndrome brain. |
| Uniprot ID: | Q16555 |
| NCBI: | NP_001184222.1 |
| GeneID: | 1808 |
| Host: | Rabbit |
| Immunogen: | Peptide sequence around phosphorylation site of threonine 509 (S-V-T(p)-P-K) derived from Human CRMP-2 (KLH-conjugated) |
| Format: | State: Liquid Ig fraction Purification: Affinity chromatography using epitope-specific peptide Buffer System: Rabbit IgG in phosphate buffered saline (without Mg ²⁺ and Ca ²⁺), pH 7.4, 150mM NaCl, 0.02% sodium azide and 50% glycerol |
| Applications: | Western blot: 1:500~1:1000. Immunohistochemistry on paraffin sections: 1:50~1:100. Other applications not tested. Optimal dilutions are dependent on conditions and should be determined by the user. |
| Molecular Weight: | 50 kDa |
| Specificity: | The antibody detects endogenous levels of CRMP-2 only when phosphorylated at threonine 509. |
| Species Reactivity: | Tested: Human, Mouse, Rat |
| Storage: | Upon receipt, store undiluted (in aliquots) at -20°C. Avoid repeated freezing and thawing. Shelf life: one year from despatch. |
| General Readings: | 1. Miki Y, Swensen J, Shattuck-Eidens D, Futreal PA, Harshman K, Tavtigian S, et al. A strong candidate for the breast and ovarian cancer susceptibility gene BRCA1. Science. 1994 Oct 7;266(5182):66-71. PubMed PMID: 7545954. 2. Smith TM, Lee MK, Szabo CI, Jerome N, McEuen M, Taylor M, et al. Complete genomic sequence and analysis of 117 kb of human DNA containing the gene BRCA1. Genome Res. 1996 Nov;6(11):1029-49. PubMed PMID: 8938427. 3. Wilson CA, Payton MN, Elliott GS, Buaas FW, Cajulis EE, Grosshans D, et al. Differential subcellular localization, expression and biological toxicity of BRCA1 and the splice variant BRCA1-delta11b. Oncogene. 1997 Jan 9;14(1):1-16. PubMed PMID: 9010228. |

Pictures:

Immunohistochemical analysis of paraffin-embedded human brain tissue using CRMP-2 (Phospho-Thr509) antibody AP55813PU-N (left) or the same antibody preincubated with blocking peptide (right).



Western blot analysis of extracts from HT-29 cells treated with heat shock using CRMP-2 (Phospho-Thr509) Antibody AP55813PU-N. The lane on the right is treated with the antigen-specific peptide.

