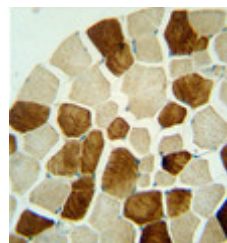


AP54741PU-N

Polyclonal Antibody to ZSWIM6 (C-term) - Aff - Purified

Alternate names:	FOX D4L3, Forkhead box protein D4-like 3
Quantity:	0.4 ml
Concentration:	lot specific
Uniprot ID:	Q9HCL5
NCBI:	NP_065979
GeneID:	57688
Host / Isotype:	Rabbit / Ig
Immunogen:	KLH conjugated synthetic peptide between 1153-1183 amino acids from the C-terminal region of human ZSWIM6
Format:	State: Liquid Ig fraction Purification: Protein A column followed by peptide affinity purification Buffer System: PBS with 0.09% (W/V) sodium azide
Applications:	ELISA: 1:1;000. Western blot: 1:100~500. Immunohistochemistry: 1:50~100. Other applications not tested. Optimal dilutions are dependent on conditions and should be determined by the user.
Specificity:	This antibody detects ZSWIM6 (C-term).
Species Reactivity:	Tested: Human
Add. Information:	Molecular Weight: 133 KD Da
Storage:	Store at 2 - 8 °C for up to six months or (in aliquots) at -20 °C for longer. Avoid repeated freezing and thawing. Shelf life: one year from despatch.
Pictures:	ZSWIM6 antibody (C-term) (AP54741PU-N) immunohistochemistry analysis in formalin fixed and paraffin embedded human skeletal muscle followed by peroxidase conjugation of the secondary antibody and DAB staining. This data demonstrates the use of the ZSWIM6 antibody (C-term) for immunohistochemistry. Clinical relevance has not been evaluated.



ZSWIM6 Antibody (C-term) (AP54741PU-N) western blot analysis in MDA-MB231 cell line lysates (35 µg/lane). This demonstrates the ZSWIM6 antibody detected the ZSWIM6 protein (arrow).

