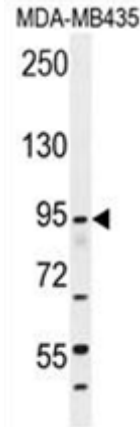


Polyclonal Antibody to ZFR2 (C-term) - Aff - Purified

| | |
|----------------------------|---|
| Alternate names: | KIAA1086, Zinc finger RNA-binding protein 2 |
| Catalog No.: | AP54649PU-N |
| Quantity: | 0.1 mg |
| Concentration: | 0.25 mg/ml |
| Uniprot ID: | Q9UPR6 |
| NCBI: | NP_001139112 |
| GeneID: | 23217 |
| Host / Isotype: | Rabbit / Ig |
| Immunogen: | KLH conjugated synthetic peptide between 891-920 amino acids from the C-terminal region of human ZFR2 |
| Format: | State: Liquid Ig fraction Purification: Protein A column followed by peptide affinity purification Buffer System: PBS with 0.09% (W/V) sodium azide |
| Applications: | ELISA: 1:1;000. Western blot: 1:100~500. Flow cytometry: 1:10~50. Other applications not tested. Optimal dilutions are dependent on conditions and should be determined by the user. |
| Specificity: | This antibody detects ZFR2 (C-term). |
| Species Reactivity: | Tested: Human |
| Add. Information: | Molecular Weight: 101330 Da |
| Storage: | Store at 2 - 8 °C for up to six months or (in aliquots) at -20 °C for longer. Avoid repeated freezing and thawing. Shelf life: one year from despatch. |
| General Readings: | 1. Kimura, K., et al. Genome Res. 16(1):55-65(2006). 2. Strausberg, R.L., et al. Proc. Natl. Acad. Sci. U.S.A. 99(26):16899-16903(2002). |

Pictures:

ZFR2 Antibody (C-term) (AP54649PU-N) western blot analysis in MDA-MB435 cell line lysates (35 µg/lane). This demonstrates the ZFR2 antibody detected the ZFR2 protein (arrow).



ZFR2 Antibody (C-term) (AP54649PU-N) flow cytometric analysis of MDA-MB435 cells (right histogram) compared to a negative control cell (left histogram). FITC-conjugated goat-anti-rabbit secondary antibodies were used for the analysis.

