

AP54595PU-N

Polyclonal Antibody to YI016 (C-term) - Aff - Purified

Alternate names:

Putative tubulin beta chain-like protein ENSP00000290377

Quantity:

0.4 ml

Concentration:

lot specific

Background:

Tubulin is the major constituent of microtubules. It binds two moles of GTP, one at an exchangeable site on the beta chain and one at a non-exchangeable site on the alpha-chain (By similarity).

Uniprot ID:

[A6NKZ8](#)

NCBI:

[9606](#)

Host / Isotype:

Rabbit / Ig

Immunogen:

KLH conjugated synthetic peptide between 260-288 amino acids from the C-terminal region of Human YI016

Format:

State: Liquid purified Ig fraction

Purification: Protein A column, followed by peptide affinity purification

Buffer System: PBS containing 0.09% (W/V) Sodium Azide as preservative

Applications:

ELISA: 1/1000.

Western Blot: 1/100-1/500.

Immunofluorescence: 1/10-1/50.

Immunohistochemistry on Paraffin Sections: 1/10-1/50.

Other applications not tested. Optimal dilutions are dependent on conditions and should be determined by the user.

Specificity:

This antibody detects Human YI016 (C-term).

Add. Information:

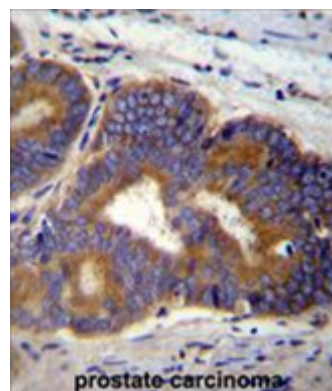
Molecular Weight: 41775 Da

Storage:

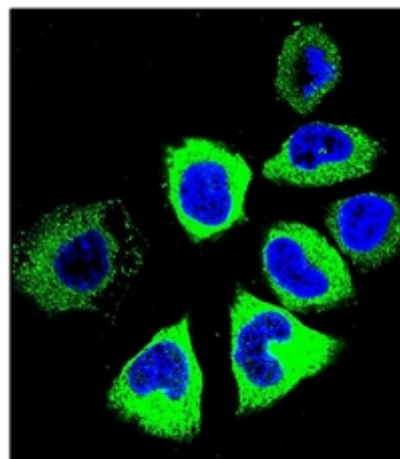
Store undiluted at 2-8°C for one month or (in aliquots) at -20°C for longer.
Avoid repeated freezing and thawing.
Shelf life: one year from despatch.

Pictures:

Formalin fixed, paraffin embedded human prostate carcinoma stained with YI016 Antibody (C-term) Cat.-No AP54595PU-N followed by peroxidase conjugation of the secondary antibody and DAB staining.



Confocal immunofluorescent analysis of YI016 Antibody (C-term) Cat.-No AP54595PU-N with NCI-H460 cell followed by Alexa Fluor 488-conjugated Goat anti-Rabbit IgG (green). DAPI was used to stain the cell nuclear (blue).



Western blot analysis of YI016 Antibody (C-term) Cat.-No AP54595PU-N in K562,HL-60,NCI-H460 cell line lysates (35 µg/lane). This demonstrates the YI016 antibody detected the YI016 protein (arrow).

